

# **MOURNING DOVE**

The 2022 mourning dove season was open 1 September - 9 November statewide. The daily limit was 15 birds, possession 30. To hunt doves, residents were required to hold a small game, 1-day small game, adult or senior combination, or youth small game license; nonresidents were required to obtain a nonresident small game or nonresident youth small game license. All hunters were also required to purchase a Migratory Bird Certificate.

In 2022, 23,817 resident and 78,987 nonresident licenses were issued to hunt doves. Approximately 42% of resident migratory bird hunters and 19% of nonresident small game hunters were surveyed for the mourning dove season. Survey response rates were 33% for residents and 32% for nonresidents.

Based on survey responses indicating at least one day of hunting doves, there were an estimated 7,361 active dove hunters. The five counties with the highest reported dove harvests were Hughes, Minnehaha, Charles Mix, Perkins, and Brookings.

An estimated total of 149,001 doves were harvested during the 2022 season. When asked their satisfaction on the season, (1 being least, 7 being most satisfied), resident dove hunters reported an average satisfaction rating of 5.29, nonresidents 6.35.

## Summary comparison of the 2013 - 2022 mourning dove seasons

Year	<i>Residents</i>					<i>Nonresidents</i>				
	<i>Number Hunters</i>	<i>Harvest</i>	<i>Ave Day Hunted</i>	<i>Ave Bag</i>	<i>Satisfaction</i>	<i>Number Hunters</i>	<i>Harvest</i>	<i>Ave Day Hunted</i>	<i>Ave Bag</i>	<i>Satisfaction</i>
2013	6,752	113,367	4.56	16.79	5.06	210	2,061	2.67	9.80	5.27
2014	8,345	167,407	4.67	20.06	5.05	316	3,991	2.95	12.62	5.71
2015	7,255	127,217	4.66	17.53	5.07	396	7,705	3.29	19.46	5.83
2016	7,131	122,876	4.19	17.23	4.89	318	3,601	2.79	11.32	5.59
2017	6,828	124,052	4.11	18.17	5.12	275	3,463	3.79	12.58	4.63
2018	6,531	120,835	4.16	18.50	5.12	275	3,571	3.22	13.00	5.72
2019	6,003	102,771	3.92	17.12	5.14	290	3,827	3.15	13.20	4.85
2020	6,844	122,464	4.45	17.89	5.21	416	7,158	3.55	17.23	6.06
2021	6,298	107,736	4.04	17.11	5.15	393	6,923	3.35	17.62	5.38
2022	6,855	141,349	4.39	20.62	5.29	506	7,652	3.32	15.13	6.35

## **MOURNING DOVE HARVEST PROJECTIONS FOR 2022**

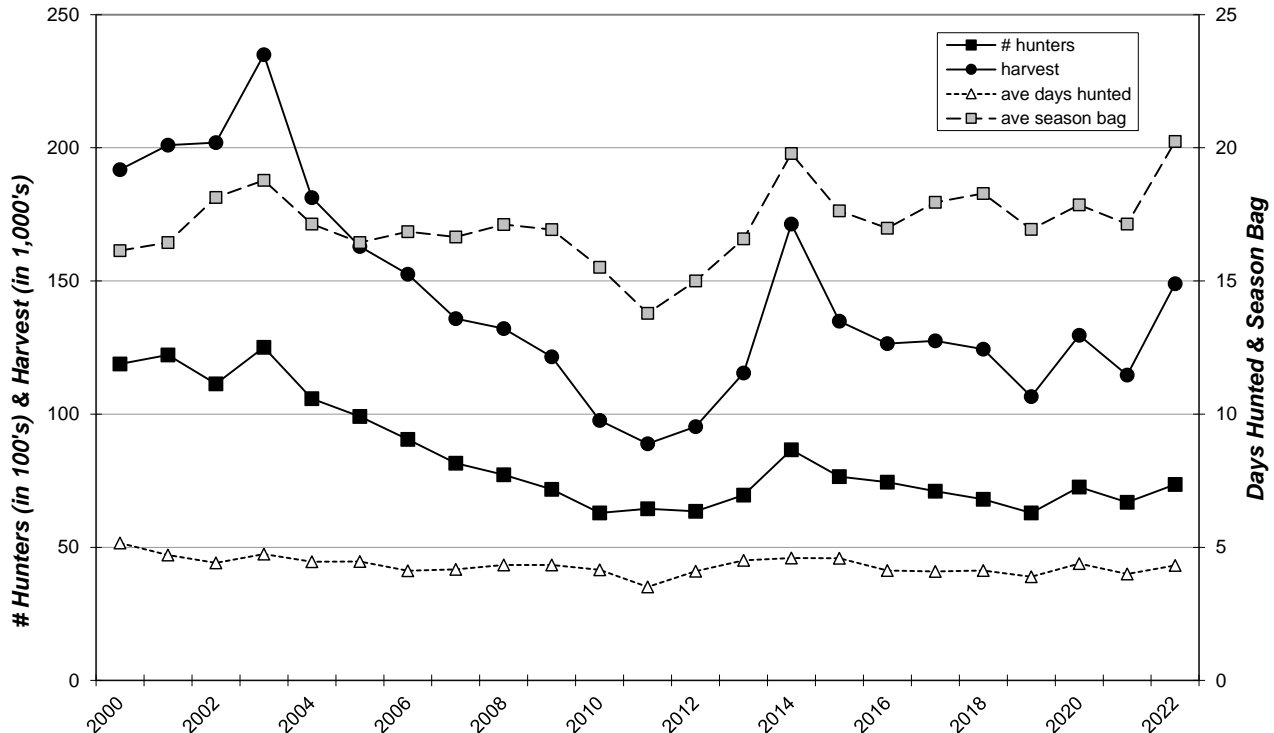
Last Revised: 4 Aug 2023

	Resident	Non Resident
<b>Licenses Sold *</b>	23,817	78,987
<b>Unique License Holders</b>	23,351	77,138
<b>Projected ACTIVE MOURNING DOVE HUNTERS</b>	<b>6,855</b>	<b>506</b>
Number Sampled by Survey	9,995	14,895
Number Responded to Survey	3,266	4,728
Responded and Participated in Season	940	31
Responded but DID NOT HUNT	<b>2,326</b>	<b>4,697</b>
<b>Survey Response Rate</b>	<b>32.7%</b>	<b>31.7%</b>
No. Hunters Reporting Dove Days	940	31
Total Reported Dove Hunted Days	4,129	103
<b>Average Days Hunted Doves</b>	<b>4.39</b>	<b>3.32</b>
Total Reported Doves Bagged	19,383	469
<b>Average Dove Bag for Season</b>	<b>20.62</b>	<b>15.13</b>
<b>Projected Days Dove Hunting</b>	<b>30,110</b>	<b>1,680</b>
<b>Projected No. Dove Hunters</b>	<b>6,855</b>	<b>506</b>
<b>Projected Dove Bag</b>	<b>141,349</b>	<b>7,652</b>
<b>Avg Days Hunted</b>		<b>4.32</b>
<b>TOTAL DOVE HARVEST =</b>		<b>149,001</b>
<b>Dove Hunter Mean Satisfaction Score *1*</b>	5.29	6.35

\* Nonresident number represents total number of small game licenses sold.

\*1\* Based on scale of 1-7 with 1=very dissatisfied & 7=very satisfied.

### STATEWIDE MOURNING DOVE HARVEST, 2000-2022



## Mourning Dove Harvest Distribution by County 2022

COUNTY	HUNTER DISTRIBUTION				HARVEST DISTRIBUTION				Birds/Hunter **
	# Reported	# Projected	% of Total	# Proj w/ Unk *	# Reported	# Projected	% of Total	# Proj w/ Unk *	
Minnehaha	52	394	5.4	399	979	7,348	5.0	7,381	18.6
Pennington	2	15	0.2	15	18	135	0.1	136	8.9
Brown	35	265	3.6	268	505	3,790	2.6	3,807	14.3
Beadle	21	159	2.2	161	379	2,845	1.9	2,857	17.9
Codington	33	250	3.4	253	558	4,188	2.8	4,207	16.7
Brookings	35	265	3.6	268	736	5,524	3.7	5,549	20.8
Yankton	26	197	2.7	199	549	4,121	2.8	4,139	20.9
Davison	33	250	3.4	253	591	4,436	3.0	4,456	17.7
Lawrence	4	30	0.4	31	56	420	0.3	422	13.9
Aurora	18	136	1.9	138	358	2,687	1.8	2,699	19.7
Bennett	8	61	0.8	61	145	1,088	0.7	1,093	17.9
Bon Homme	14	106	1.5	107	195	1,464	1.0	1,470	13.8
Brule	23	174	2.4	176	406	3,047	2.1	3,061	17.5
Buffalo	1	8	0.1	8	80	600	0.4	603	79.2
Butte	7	53	0.7	54	75	563	0.4	565	10.6
Campbell	2	15	0.2	15	8	60	0.0	60	4.0
Charles Mix	26	197	2.7	199	745	5,592	3.8	5,617	28.4
Clark	13	99	1.4	100	236	1,771	1.2	1,779	18.0
Clay	15	114	1.6	115	371	2,785	1.9	2,797	24.5
Corson	3	23	0.3	23	32	240	0.2	241	10.6
Custer	17	129	1.8	130	313	2,349	1.6	2,360	18.2
Day	20	152	2.1	153	347	2,604	1.8	2,616	17.2
Deuel	13	99	1.4	100	380	2,852	1.9	2,865	28.9
Dewey	1	8	0.1	8	30	225	0.2	226	29.7
Douglas	6	45	0.6	46	101	758	0.5	761	16.7
Edmunds	9	68	0.9	69	85	638	0.4	641	9.4
Fall River	15	114	1.6	115	231	1,734	1.2	1,742	15.2
Faulk	5	38	0.5	38	59	443	0.3	445	11.7
Grant	6	45	0.6	46	77	578	0.4	581	12.7
Gregory	11	83	1.1	84	166	1,246	0.8	1,251	14.9
Haakon	10	76	1.0	77	194	1,456	1.0	1,463	19.2
Hamlin	14	106	1.5	107	211	1,584	1.1	1,591	14.9
Hand	10	76	1.0	77	225	1,689	1.1	1,696	22.3
Hanson	4	30	0.4	31	105	788	0.5	792	26.0
Harding	3	23	0.3	23	20	150	0.1	151	6.6
Hughes	83	629	8.6	636	2,576	19,334	13.0	19,420	30.7
Hutchinson	13	99	1.4	100	250	1,876	1.3	1,885	19.0
Hyde	2	15	0.2	15	57	428	0.3	430	28.2
Jackson	6	45	0.6	46	147	1,103	0.7	1,108	24.3
Jerauld	4	30	0.4	31	14	105	0.1	106	3.5
Jones	5	38	0.5	38	116	871	0.6	875	23.0
Kingsbury	12	91	1.3	92	181	1,359	0.9	1,365	14.9
Lake	21	159	2.2	161	412	3,092	2.1	3,106	19.4
Lincoln	32	243	3.3	245	525	3,940	2.7	3,958	16.2
Lyman	10	76	1.0	77	307	2,304	1.6	2,314	30.4
McCook	19	144	2.0	146	458	3,438	2.3	3,453	23.9
McPherson	8	61	0.8	61	185	1,389	0.9	1,395	22.9
Marshall	4	30	0.4	31	57	428	0.3	430	14.1
Meade	21	159	2.2	161	416	3,122	2.1	3,136	19.6
Mellette	2	15	0.2	15	32	240	0.2	241	15.8
Miner	5	38	0.5	38	93	698	0.5	701	18.4
Moody	14	106	1.5	107	333	2,499	1.7	2,510	23.6
Perkins	40	303	4.2	307	841	6,312	4.3	6,340	20.8
Potter	9	68	0.9	69	224	1,681	1.1	1,689	24.6
Roberts	14	106	1.5	107	294	2,207	1.5	2,216	20.8
Sanborn	10	76	1.0	77	128	961	0.6	965	12.7
Spink	12	91	1.3	92	168	1,261	0.9	1,267	13.9
Stanley	14	106	1.5	107	263	1,974	1.3	1,983	18.6
Sully	18	136	1.9	138	378	2,837	1.9	2,850	20.8
Tripp	12	91	1.3	92	409	3,070	2.1	3,083	33.7
Turner	18	136	1.9	138	461	3,460	2.3	3,475	25.4
Union	16	121	1.7	123	283	2,124	1.4	2,134	17.5
Walworth	8	61	0.8	61	261	1,959	1.3	1,968	32.3
Ziebach	0	0	0.0	0	0	0	0.0	0	0
Shannon	10	76	1.0	77	303	2,274	1.5	2,284	30.0
Todd	3	23	0.3	23	26	195	0.1	196	8.6
Unk/Unreported	11	83	-	-	88	660	-	-	7.9
<b>TOTALS:</b>	<b>971</b>	<b>7,361</b>	<b>100%</b>	<b>7,361</b>	<b>19,852</b>	<b>149,001</b>	<b>100%</b>	<b>149,001</b>	<b>20.24</b>

Last Revised: 4 Aug 2023

\* Includes unknown county projection values by assuming unknown county values are distributed the same as reported county values. Total values may be different due to rounding.

\*\* Calculation uses "# projected" values without correction for unknown/unreported county values.