

# **CANADA GEESE (all seasons)**

Information provided in this section pertains to the entire Canada goose harvest in South Dakota and combines information from all seasons. The next two sections report specifically on the Early Fall (September) and Special Bennett County seasons.

The 2022 Canada goose season was open from 1 September 2022 - 12 February 2023 statewide, although some units may have opened later and/or closed sooner. The daily bag was 8 geese in Unit 1, but only 4 in Units 2 and 3 (refer to Hunting Handbook). Possession was three times the daily bag. Resident hunters were separately licensed for one Special Canada goose unit in Bennett County. To hunt geese, residents were required to hold small game, 1-day small game, youth small game, adult or senior combination licenses plus a migratory bird certification. Nonresidents were required to obtain a nonresident waterfowl license plus a migratory bird certification. All hunters aged 16 and over were also required to obtain a federal waterfowl stamp. Special Canada goose season hunters were required to apply for and receive Special Canada goose season licenses.

In 2022, there were an estimated 11,300 hunters who hunted at least one day for Canada geese (8,973 residents, 2,327 nonresidents). From the survey responses, there were a projected total of 98,889 Canada geese harvested (90,680 by residents, 8,209 by nonresidents). Average Canada goose bag for residents was 10.11, and for nonresidents 3.55. An estimated 22,378 Canada geese were harvested within 20 miles of the Missouri River.

The five counties with the highest reported harvest by residents were Codington, Day, Deuel, Brookings, and Hughes, and by nonresidents in unit 00B were Day, Kingsbury, Roberts, Brown, and Clark.

When asked their satisfaction on the season, (1 being least satisfied, 7 being most satisfied), Canada goose hunters reported an average rating of 5.07 for residents and 5.51 for nonresidents. The average days hunted by all hunters (6.96 residents, 4.11 nonresidents) projected to a total of 71,759 recreation days for the season.

## Comparison of the 2013 - 2022 Canada goose harvest statistics

Year	Resident Hunters					Nonresident Hunters				
	Number Hunters	Harvest	Ave Days Hunted	Ave Bag	Satisfaction	Number Hunters	Harvest	Ave Days Hunted	Ave Bag	Satisfaction
2013	12,004	117,846	7.54	9.82	5.06	2,160	6,310	4.24	2.92	5.37
2014	12,130	97,956	6.92	8.08	4.96	1,969	5,193	4.31	2.76	5.22
2015	10,228	73,471	7.00	7.18	4.78	2,104	5,482	4.30	2.70	4.98
2016	9,964	85,809	6.98	8.61	4.87	2,046	5,485	4.51	2.77	4.86
2017	9,762	76,827	6.95	7.87	5.06	2,428	6,601	4.19	2.74	5.18
2018	8,633	63,848	6.67	7.40	4.93	2,289	5,638	4.17	2.52	5.11
2019	9,264	78,143	6.85	8.44	5.09	2,209	5,995	4.05	2.82	5.41
2020	10,356	93,682	6.96	9.05	5.07	2,199	6,924	3.96	3.15	5.38
2021	9,997	104,693	7.20	10.47	5.14	2,357	6,736	4.14	2.89	5.27
2022	8,973	90,680	6.96	10.11	5.07	2,327	8,209	4.11	3.55	5.51

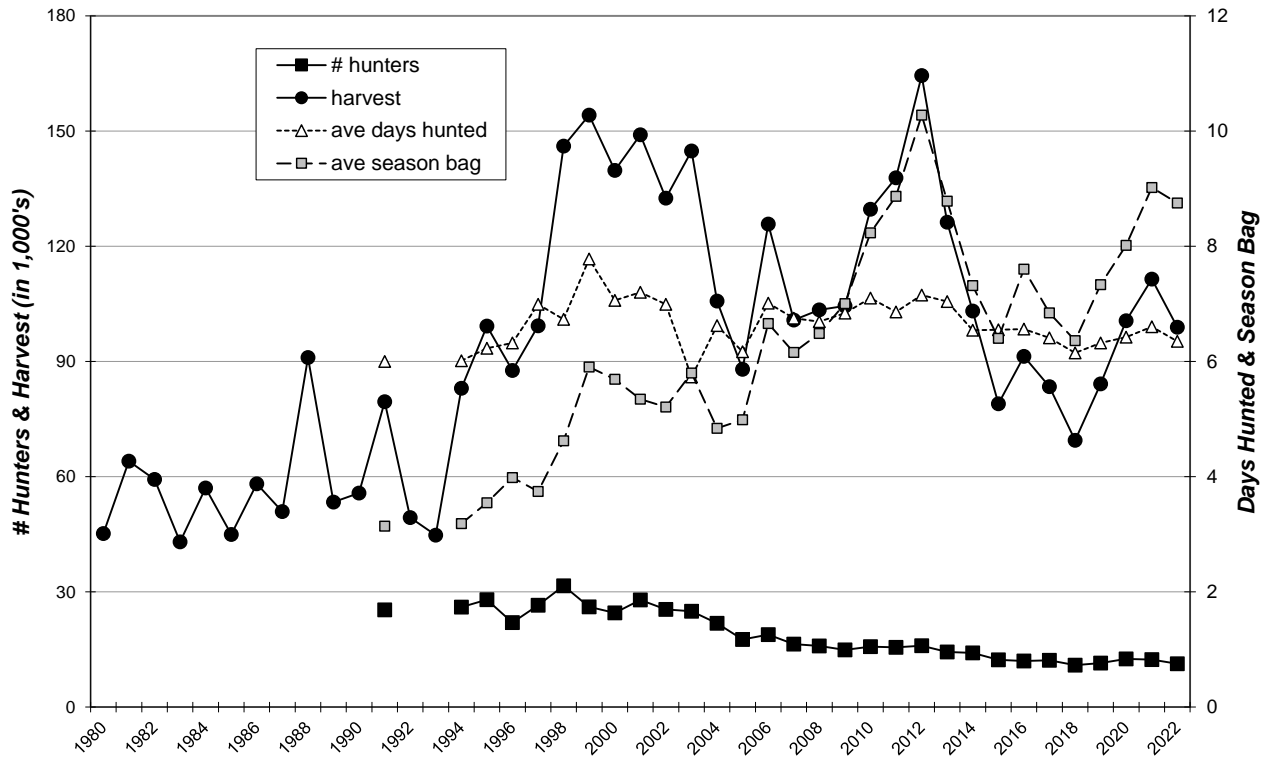
### CANADA GOOSE HARVEST PROJECTIONS FOR 2022

Revised: 1 June 2023

	NONRESIDENT TOTALS BY UNIT								NR Totals	Resident Total
	00A	00B	11A	00V	00X	00Y	00Z	YW1		
No. Hunters Reporting Canada Goose Days	52	712	5	55	52	82	22		980	1,255
Total Reported Canada Goose Hunted Days	404	3,058	18	145	126	218	57		4,026	8,729
<b>Average Days Hunted Canada Geese</b>	<b>7.77</b>	<b>4.29</b>	<b>3.60</b>	<b>2.64</b>	<b>2.42</b>	<b>2.66</b>	<b>2.59</b>		<b>4.11</b>	<b>6.96</b>
Total Reported Canada Geese Bagged	529	2,373	7	156	232	136	49		3,482	12,683
<b>Average Canada Goose Bag for Season</b>	<b>10.17</b>	<b>3.33</b>	<b>1.40</b>	<b>2.84</b>	<b>4.46</b>	<b>1.66</b>	<b>2.23</b>		<b>3.55</b>	<b>10.11</b>
<b>Projected Days Canada Goose Hunting</b>	<b>923</b>	<b>6,796</b>	<b>48</b>	<b>414</b>	<b>405</b>	<b>592</b>	<b>172</b>		<b>9,349</b>	<b>62,410</b>
<b>Projected No. Canada Goose Hunters</b>	<b>119</b>	<b>1,582</b>	<b>13</b>	<b>157</b>	<b>167</b>	<b>223</b>	<b>66</b>		<b>2,327</b>	<b>8,973</b>
<b>Projected Canada Goose Bag</b>	<b>1,208</b>	<b>5,274</b>	<b>19</b>	<b>445</b>	<b>746</b>	<b>369</b>	<b>148</b>		<b>8,209</b>	<b>90,680</b>
Canada Geese Reported w/in 20 miles of Missouri River	498	144		11	206		0		859	2,829
<b>Projected Canada Geese Bagged w/in 20 miles Missouri River</b>	<b>1,138</b>	<b>320</b>		<b>31</b>	<b>662</b>		<b>0</b>		<b>2,151</b>	<b>20,227</b>
<b>TOTAL CANADA GOOSE HARVEST ALL SEASONS = 98,889</b>										
<b>Canada Goose Hunter Mean Satisfaction Score *1*</b>	5.20	5.51	5.80	5.73	5.87	5.39	5.23		5.51	5.07

\*1\* Based on scale of 1-7 with 1=very dissatisfied & 7=very satisfied

### STATEWIDE CANADA GOOSE (all seasons) HARVEST, 1980-2022



## Resident Canada Goose Harvest Distribution by County 2022

COUNTY	HUNTER DISTRIBUTION				HARVEST DISTRIBUTION				Birds/Hunter **
	# Reported	# Projected	% of Total	# Proj w/ Unk *	# Reported	# Projected	% of Total	# Proj w/ Unk *	
Minnehaha	43	307	3.5	316	221	1,580	1.8	1,643	5.1
Pennington	18	129	1.5	132	240	1,716	2.0	1,784	13.3
Brown	73	522	6.0	536	519	3,711	4.3	3,859	7.1
Beadle	23	164	1.9	169	177	1,266	1.5	1,316	7.7
Codington	54	386	4.4	397	692	4,948	5.7	5,145	12.8
Brookings	60	429	4.9	441	853	6,099	7.0	6,342	14.2
Yankton	19	136	1.6	140	282	2,016	2.3	2,097	14.8
Davison	9	64	0.7	66	58	415	0.5	431	6.4
Lawrence	9	64	0.7	66	52	372	0.4	387	5.8
Aurora	19	136	1.6	140	154	1,101	1.3	1,145	8.1
Bennett	25	179	2.0	184	85	608	0.7	632	3.4
Bon Homme	14	100	1.1	103	140	1,001	1.1	1,041	10.0
Brule	24	172	2.0	176	127	908	1.0	944	5.3
Buffalo	1	7	0.1	7	3	21	0.0	22	3.0
Butte	15	107	1.2	110	123	879	1.0	914	8.2
Campbell	1	7	0.1	7	20	143	0.2	149	20.0
Charles Mix	34	243	2.8	250	256	1,830	2.1	1,903	7.5
Clark	65	465	5.3	477	494	3,532	4.1	3,673	7.6
Clay	13	93	1.1	95	168	1,201	1.4	1,249	12.9
Corson	1	7	0.1	7	2	14	0.0	15	2.0
Custer	1	7	0.1	7	2	14	0.0	15	2.0
Day	79	565	6.5	580	1,337	9,559	11.0	9,940	16.9
Deuel	28	200	2.3	206	531	3,797	4.4	3,948	19.0
Dewey	1	7	0.1	7	1	7	0.0	7	1.0
Douglas	3	21	0.2	22	14	100	0.1	104	4.7
Edmunds	12	86	1.0	88	196	1,401	1.6	1,457	16.3
Fall River	31	222	2.5	228	215	1,537	1.8	1,598	6.9
Faulk	8	57	0.7	59	54	386	0.4	401	6.8
Grant	16	114	1.3	117	126	901	1.0	937	7.9
Gregory	0	0	0.0	0	0	0	0.0	0	0
Haakon	4	29	0.3	29	10	71	0.1	74	2.5
Hamlin	30	214	2.5	220	255	1,823	2.1	1,896	8.5
Hand	12	86	1.0	88	154	1,101	1.3	1,145	12.8
Hanson	3	21	0.2	22	35	250	0.3	260	11.7
Harding	2	14	0.2	15	16	114	0.1	119	8.0
Hughes	89	636	7.3	654	1,037	7,414	8.5	7,710	11.7
Hutchinson	6	43	0.5	44	55	393	0.5	409	9.2
Hyde	2	14	0.2	15	4	29	0.0	30	2.0
Jackson	0	0	0.0	0	0	0	0.0	0	0
Jerauld	4	29	0.3	29	9	64	0.1	67	2.3
Jones	2	14	0.2	15	6	43	0.0	45	3.0
Kingsbury	59	422	4.8	433	406	2,903	3.3	3,018	6.9
Lake	40	286	3.3	294	251	1,795	2.1	1,866	6.3
Lincoln	15	107	1.2	110	98	701	0.8	729	6.5
Lyman	7	50	0.6	51	24	172	0.2	178	3.4
McCook	26	186	2.1	191	121	865	1.0	900	4.7
McPherson	20	143	1.6	147	200	1,430	1.6	1,487	10.0
Marshall	26	186	2.1	191	415	2,967	3.4	3,085	16.0
Meade	11	79	0.9	81	67	479	0.5	498	6.1
Mellette	0	0	0.0	0	0	0	0.0	0	0
Miner	13	93	1.1	95	105	751	0.9	781	8.1
Moody	11	79	0.9	81	137	980	1.1	1,019	12.5
Perkins	13	93	1.1	95	110	786	0.9	818	8.5
Potter	6	43	0.5	44	47	336	0.4	349	7.8
Roberts	33	236	2.7	242	523	3,739	4.3	3,888	15.8
Sanborn	7	50	0.6	51	12	86	0.1	89	1.7
Spink	14	100	1.1	103	93	665	0.8	691	6.6
Stanley	17	122	1.4	125	185	1,323	1.5	1,375	10.9
Sully	26	186	2.1	191	400	2,860	3.3	2,974	15.4
Tripp	3	21	0.2	22	5	36	0.0	37	1.7
Turner	4	29	0.3	29	66	472	0.5	491	16.5
Union	13	93	1.1	95	191	1,366	1.6	1,420	14.7
Walworth	3	21	0.2	22	9	64	0.1	67	3.0
Ziebach	0	0	0.0	0	0	0	0.0	0	0
Shannon	1	7	0.1	7	8	57	0.1	59	8.0
Todd	1	7	0.1	7	1	7	0.0	7	1.0
Unk/Unreported	33	236	-	-	486	3,475	-	-	14.7
<b>TOTALS:</b>	<b>1,255</b>	<b>8,973</b>	<b>100%</b>	<b>8,973</b>	<b>12,683</b>	<b>90,680</b>	<b>100%</b>	<b>90,680</b>	<b>10.11</b>

Last Revised: 2 Aug 2023

\* Includes unknown county projection values by assuming unknown county values are distributed the same as reported county values. Total values may be different due to rounding.

\*\* Calculation uses "# projected" values without correction for unknown/unreported county values.