

PHEASANT

The 2022 pheasant season was open from 15 October 2022 – 31 January 2023 statewide. There was also a Youth season open 24 September - 2 October on public and private land and an early resident season open 8-10 October on public lands only. The daily limit was 3 cock pheasants, possession 15. To hunt pheasants, residents were required to hold small game, 1-day small game, adult, senior or junior combination, or youth small game licenses; nonresidents were required to obtain adult or youth small game or nonresident shooting preserve licenses. Harvest surveys were sent to both resident and nonresident hunters. No shooting preserve license holders were surveyed and none of their harvest is included in any of the data in this report.

In 2022, there were 83,430 resident and 78,987 nonresident licenses issued that allowed holders to hunt pheasants. Approximately 15,000 residents and 15,000 nonresidents were surveyed for the upland bird seasons. Survey response rates were 28% for residents and 32% for nonresidents.

Based on survey responses indicating at least one day of hunting pheasants, there were a projected 53,846 resident and 73,887 nonresident pheasant hunters.

A projected 1,158,716 pheasants were harvested (510,957 by residents, 647,759 by nonresidents) during the 2022 seasons. When asked their satisfaction on the season, (1 being least satisfied, 7 being most satisfied), resident upland bird hunters reported an average satisfaction rating of 5.09 while nonresidents reported a satisfaction rating of 5.85.

Approximately 11,087 residents participated in the early, resident-only season. The projected harvest for this season was 20,913 birds.

The Youth season overall participation rate was approximately 4.8%; nonresidents were not surveyed on their participation.

The five counties with the highest reported harvests from highest to lowest were Brown, Beadle, Brule, Spink, and Tripp.

Comparison of the 2013 - 2022 Pheasant season statistics

Year	<i>Resident Hunters</i>					<i>Nonresident Hunters</i>				
	<i>Number Hunters</i>	<i>Harvest</i>	<i>Ave Day Hunted</i>	<i>Ave Bag</i>	<i>Satisfaction</i>	<i>Number Hunters</i>	<i>Harvest</i>	<i>Ave Day Hunted</i>	<i>Ave Bag</i>	<i>Satisfaction</i>
2013	57,647	368,567	6.33	7.15	4.11	74,413	561,445	3.99	7.74	4.95
2014	61,776	504,144	6.31	8.32	4.85	79,195	695,660	4.16	8.79	5.52
2015	65,135	517,942	6.17	8.06	4.98	84,901	737,936	4.15	8.71	5.49
2016	61,746	478,099	6.24	7.86	4.72	81,141	692,497	4.14	8.57	5.43
2017	52,538	326,936	6.08	6.30	4.23	67,232	501,773	3.96	7.47	5.06
2018	53,577	392,020	6.26	7.38	4.64	69,018	558,863	4.06	8.11	5.38
2019	47,403	354,742	6.17	7.48	4.67	63,801	474,754	4.04	7.44	5.28
2020	59,042	518,288	8.09	9.28	5.06	62,289	560,618	4.47	9.00	5.75
2021	54,411	473,728	7.62	8.71	4.75	75,606	593,695	4.30	7.85	5.38
2022	53,846	510,957	7.75	9.49	5.09	73,887	647,759	4.25	8.77	5.85

PHEASANT HARVEST PROJECTIONS FOR 2022

Revised:
5/8/2023

	<u>RESIDENT TOTALS BY LICENSE TYPE</u>					<u>NONRESIDENT TOTALS</u>		
	Combo	Senior Combo	Small Game	Youth SmGm	Sum Estimates	Nonres Sm Game	Youth Sm Game	Sum Estimates
Licenses Sold	47,570	11,366	18,492	6,002	83,430	76,073	2,914	78,987
Projected ACTIVE UPLAND BIRD HUNTERS	29,351	6,273	14,624	4,390	54,639	71,980	2,748	74,728
Number Sampled by Survey	8,810	1,837	3,118	1,092	14,857	14,380	515	14,895
Number Responded to Survey	2,457	799	631	216	4,103	4,663	65	4,728
% Responded and Participated in Season	62%	55%	79%	73%	64%	97%	95%	97%
Responded and Participated in Season	1,516	441	499	158	2,614	4,520	62	4,582
Responded but DID NOT HUNT	941	358	132	58	1,489	143	3	146
Survey Response Rate	27.9%	43.5%	20.2%	19.8%	27.6%	32.4%	12.6%	31.7%
No. Hunters Reporting Pheasant Days	1,495	430	494	155	2,574	4,470	61	4,531
Sum Pheasant Hunted Days	12,241	3,860	3,314	1,019	20,434	19,094	226	19,320
Average Days Hunted Pheasants	8.19	8.98	6.71	6.57	7.75	4.27	3.70	4.25
Sum Pheasants Bagged	15,603	4,360	4,110	950	25,023	39,563	400	39,963
Average Pheasant Bag for Season	10.44	10.14	8.32	6.13	9.49	8.85	6.56	8.77
Projected Days Pheasant Hunting	236,998	54,910	97,120	28,315	417,342	304,067	10,017	314,084
Projected No. Pheasant Hunters	28,945	6,117	14,477	4,307	53,846	71,184	2,704	73,887
Projected Pheasant Bag	302,090	62,022	120,447	26,398	510,957	630,030	17,729	647,759
LCI (95%)	281,296	53,467	105,500	20,969	483,121	616,777	13,773	633,887
UCI (95%)	323,234	70,902	135,685	32,033	538,836	643,338	21,765	661,643
TOTAL PHEASANT HARVEST =						1,158,716		
LCI (95%) =						1,127,655		
UCI (95%) =						1,189,823		
RESIDENT-ONLY OPENING WEEKEND:								
No. Hunters Reporting Pheasant Days	316	80	89	44	529	-	-	-
Sum Pheasant Hunted Days	461	134	133	68	796	-	-	-
Average Days Hunted Pheasants	1.46	1.68	1.49	1.55	1.50	-	-	-
Sum Pheasants Bagged	644	166	145	66	1,021	-	-	-
Average Pheasant Bag for Weekend	2.04	2.08	1.63	1.50	1.89	-	-	-
Projected Days Pheasant Hunting	8,925	1,906	3,898	1,890	16,619	-	-	-
Projected No. Pheasant Hunters	6,118	1,138	2,608	1,223	11,087	-	-	-
Projected Pheasant Bag	12,468	2,361	4,249	1,834	20,913	-	-	-
RESIDENT-ONLY WEEKEND PHEASANT HARVEST =						20,913		
YOUTH SEASON PARTICIPATION:								
No. Hunters Reporting Participation	113	43	31	23	187	-	-	-
Projected No. Hunters Participating	2,188	612	908	639	3,708	-	-	-
Percent Hunters Participating	4.6%	5.4%	4.9%	10.6%	4.8%	-	-	-
MENTORED YOUTH PARTICIPATION:								
No. Hunters Reporting Participation	83	22	14	NA	119	-	-	-
Projected No. Hunters Participating	1,607	28	55		1,690	-	-	-
Percent Hunters Participating	3.4%	2.8%	2.2%		2.9%	-	-	-
Upland Bird Hunters Mean Satisfaction Score *	5.12	4.79	5.27	5.05	5.09	5.85	5.52	5.85

* Based on scale of 1-7 with 1="very dissatisfied" and 7="very satisfied"

RESIDENT-ONLY WEEKEND 2022 PHEASANT SEASON PARTICIPATION AND BAG

Last Revised: 9 May 2023

	# Days Hunted	# Responded	% of Total	Ave. Bag
Residents	0	3,574	87.1%	
	1	318	7.8%	1.14
	2	155	3.8%	2.75
	3	56	1.4%	4.18

Total Pheasant Harvest Distribution by County 2022

COUNTY	HUNTER DISTRIBUTION			HARVEST DISTRIBUTION			Birds/Hunter **
	# Projected	% of Total	# Proj w/ Unk *	# Projected	% of Total	# Proj w/ Unk *	
Minnehaha	1,879	1.5	1,920	12,392	1.1	12,582	6.6
Pennington	353	0.3	363	1,567	0.1	1,618	4.4
Brown	8,049	6.6	8,451	71,455	6.4	74,313	8.9
Beadle	6,119	5.0	6,409	63,994	5.7	66,298	10.5
Codington	2,235	1.8	2,306	15,013	1.3	15,390	6.7
Brookings	2,908	2.4	2,999	25,158	2.3	25,763	8.7
Yankton	1,063	0.9	1,094	8,702	0.8	8,872	8.2
Davison	2,337	1.9	2,452	21,387	1.9	22,226	9.2
Lawrence	74	0.1	77	166	0.0	175	2.2
Aurora	3,817	3.1	4,007	43,559	3.9	45,269	11.4
Bennett	937	0.8	967	4,260	0.4	4,405	4.5
Bon Homme	630	0.5	650	5,093	0.5	5,219	8.1
Brule	5,688	4.7	5,992	52,170	4.7	54,424	9.2
Buffalo	617	0.5	648	4,189	0.4	4,395	6.8
Butte	151	0.1	161	1,127	0.1	1,189	7.4
Campbell	1,451	1.2	1,535	14,781	1.3	15,522	10.2
Charles Mix	4,022	3.3	4,224	34,126	3.1	35,766	8.5
Clark	2,851	2.3	2,992	25,799	2.3	26,806	9.0
Clay	653	0.5	669	5,144	0.5	5,257	7.9
Corson	801	0.7	835	6,043	0.5	6,264	7.5
Custer	133	0.1	137	806	0.1	832	6.1
Day	2,193	1.8	2,301	16,314	1.5	16,872	7.4
Deuel	709	0.6	731	4,874	0.4	4,989	6.9
Dewey	1,357	1.1	1,425	10,073	0.9	10,550	7.4
Douglas	1,091	0.9	1,134	8,578	0.8	8,914	7.9
Edmunds	2,988	2.4	3,124	28,075	2.5	29,226	9.4
Fall River	353	0.3	363	1,076	0.1	1,100	3.0
Faulk	3,148	2.6	3,320	36,471	3.3	38,285	11.6
Grant	586	0.5	602	3,118	0.3	3,189	5.3
Gregory	3,560	2.9	3,760	31,283	2.8	32,873	8.8
Haakon	686	0.6	704	3,581	0.3	3,670	5.2
Hamlin	1,312	1.1	1,351	11,779	1.1	12,019	9.0
Hand	2,404	2.0	2,519	20,468	1.8	21,302	8.5
Hanson	1,231	1.0	1,272	12,134	1.1	12,404	9.9
Harding	279	0.2	294	1,323	0.1	1,392	4.7
Hughes	4,003	3.3	4,174	34,921	3.1	36,211	8.7
Hutchinson	1,960	1.6	2,053	17,221	1.5	17,917	8.8
Hyde	759	0.6	801	6,618	0.6	6,907	8.7
Jackson	230	0.2	242	3,011	0.3	3,110	13.1
Jerauld	1,483	1.2	1,552	14,501	1.3	15,123	9.8
Jones	1,460	1.2	1,534	14,488	1.3	15,089	9.9
Kingsbury	2,224	1.8	2,310	22,650	2.0	23,283	10.2
Lake	1,435	1.2	1,472	12,200	1.1	12,442	8.5
Lincoln	1,142	0.9	1,166	7,171	0.6	7,319	6.3
Lyman	4,609	3.8	4,852	43,940	3.9	45,854	9.5
McCook	1,702	1.4	1,743	20,735	1.9	21,034	12.2
McPherson	2,000	1.6	2,107	18,303	1.6	19,092	9.2
Marshall	1,129	0.9	1,181	8,691	0.8	9,062	7.7
Meade	282	0.2	292	2,707	0.2	2,790	9.6
Mellette	324	0.3	343	2,186	0.2	2,306	6.8
Miner	2,497	2.0	2,594	23,969	2.1	24,751	9.6
Moody	679	0.6	694	6,885	0.6	6,982	10.1
Perkins	1,891	1.5	1,960	15,150	1.4	15,621	8.0
Potter	2,214	1.8	2,322	27,502	2.5	28,576	12.4
Roberts	1,017	0.8	1,057	8,883	0.8	9,123	8.7
Sanborn	2,357	1.9	2,456	26,439	2.4	27,273	11.2
Spink	4,577	3.7	4,808	47,854	4.3	49,747	10.5
Stanley	1,422	1.2	1,486	14,408	1.3	14,913	10.1
Sully	2,441	2.0	2,541	28,555	2.6	29,434	11.7
Tripp	5,324	4.4	5,613	45,994	4.1	48,088	8.6
Turner	1,163	1.0	1,187	9,934	0.9	10,098	8.5
Union	637	0.5	652	3,024	0.3	3,096	4.7
Walworth	1,960	1.6	2,062	16,663	1.5	17,450	8.5
Ziebach	370	0.3	380	4,992	0.4	5,082	13.5
Oglala Lakota	91	0.1	95	487	0.0	512	5.4
Todd	205	0.2	217	1,005	0.1	1,065	4.9
Unk/Unreported	5,480	-	-	41,553	-	-	7.6
TOTALS:	127,733	100%	127,733	1,158,716	100%	1,158,716	9.07

Last Revised: 8 May 2023

* Includes unknown county projection values by assuming unknown county values are distributed the same as reported county values. Total values may be different due to rounding.

** Calculation uses "# projected" values without correction for unknown/unreported county values.

Resident Pheasant Harvest Distribution by County 2022

COUNTY	HUNTER DISTRIBUTION				HARVEST DISTRIBUTION				Birds/Hunter **
	# Reported	# Projected	% of Total	# Proj w/ Unk *	# Reported	# Projected	% of Total	# Proj w/ Unk *	
Minnehaha	75	1,569	3.0	1,589	537	10,965	2.2	11,070	7.0
Pennington	13	272	0.5	275	41	837	0.2	845	3.1
Brown	133	2,782	5.2	2,817	1,391	28,404	5.6	28,675	10.2
Beadle	114	2,385	4.5	2,415	1,494	30,507	6.0	30,798	12.8
Codington	71	1,485	2.8	1,504	509	10,394	2.1	10,493	7.0
Brookings	93	1,945	3.7	1,970	878	17,928	3.5	18,100	9.2
Yankton	36	753	1.4	763	342	6,983	1.4	7,050	9.3
Davison	40	837	1.6	847	433	8,842	1.7	8,926	10.6
Lawrence	2	42	0.1	42	1	20	0.0	21	0.5
Aurora	64	1,339	2.5	1,356	879	17,949	3.5	18,120	13.4
Bennett	30	628	1.2	635	107	2,185	0.4	2,206	3.5
Bon Homme	20	418	0.8	424	174	3,553	0.7	3,587	8.5
Brule	77	1,611	3.0	1,631	853	17,418	3.4	17,584	10.8
Buffalo	10	209	0.4	212	44	898	0.2	907	4.3
Butte	1	21	0.0	21	6	123	0.0	124	5.9
Campbell	14	293	0.6	297	142	2,900	0.6	2,927	9.9
Charles Mix	66	1,381	2.6	1,398	398	8,127	1.6	8,205	5.9
Clark	49	1,025	1.9	1,038	526	10,741	2.1	10,843	10.5
Clay	25	523	1.0	530	190	3,880	0.8	3,917	7.4
Corson	18	377	0.7	381	138	2,818	0.6	2,845	7.5
Custer	4	84	0.2	85	22	449	0.1	454	5.4
Day	37	774	1.5	784	410	8,372	1.7	8,452	10.8
Deuel	23	481	0.9	487	172	3,512	0.7	3,546	7.3
Dewey	22	460	0.9	466	125	2,552	0.5	2,577	5.5
Douglas	28	586	1.1	593	174	3,553	0.7	3,587	6.1
Edmunds	61	1,276	2.4	1,292	520	10,618	2.1	10,720	8.3
Fall River	13	272	0.5	275	40	817	0.2	825	3.0
Faulk	39	816	1.5	826	366	7,474	1.5	7,545	9.2
Grant	21	439	0.8	445	113	2,307	0.5	2,329	5.3
Gregory	40	837	1.6	847	281	5,738	1.1	5,793	6.9
Haakon	25	523	1.0	530	123	2,512	0.5	2,536	4.8
Hamlin	44	920	1.7	932	453	9,250	1.8	9,338	10.0
Hand	44	920	1.7	932	384	7,841	1.5	7,916	8.5
Hanson	37	774	1.5	784	445	9,087	1.8	9,174	11.7
Harding	4	84	0.2	85	10	204	0.0	206	2.4
Hughes	90	1,883	3.5	1,906	783	15,988	3.2	16,141	8.5
Hutchinson	36	753	1.4	763	329	6,718	1.3	6,782	8.9
Hyde	9	188	0.4	191	105	2,144	0.4	2,165	11.4
Jackson	4	84	0.2	85	80	1,634	0.3	1,649	19.5
Jerauld	28	586	1.1	593	241	4,921	1.0	4,968	8.4
Jones	23	481	0.9	487	261	5,329	1.1	5,380	11.1
Kingsbury	58	1,213	2.3	1,229	706	14,416	2.8	14,554	11.9
Lake	53	1,109	2.1	1,123	476	9,720	1.9	9,813	8.8
Lincoln	46	962	1.8	974	275	5,615	1.1	5,669	5.8
Lyman	66	1,381	2.6	1,398	704	14,375	2.8	14,513	10.4
McCook	65	1,360	2.6	1,377	917	18,725	3.7	18,904	13.8
McPherson	27	565	1.1	572	301	6,146	1.2	6,205	10.9
Marshall	22	460	0.9	466	147	3,002	0.6	3,030	6.5
Meade	8	167	0.3	169	77	1,572	0.3	1,587	9.4
Mellette	3	63	0.1	64	11	225	0.0	227	3.6
Miner	64	1,339	2.5	1,356	638	13,028	2.6	13,152	9.7
Moody	27	565	1.1	572	307	6,269	1.2	6,329	11.1
Perkins	53	1,109	2.1	1,123	426	8,699	1.7	8,782	7.8
Potter	38	795	1.5	805	561	11,455	2.3	11,565	14.4
Roberts	26	544	1.0	551	285	5,820	1.1	5,875	10.7
Sanborn	55	1,151	2.2	1,165	732	14,947	3.0	15,090	13.0
Spink	73	1,527	2.9	1,546	952	19,439	3.8	19,625	12.7
Stanley	29	607	1.1	614	350	7,147	1.4	7,215	11.8
Sully	59	1,234	2.3	1,250	811	16,560	3.3	16,719	13.4
Tripp	69	1,443	2.7	1,462	649	13,252	2.6	13,379	9.2
Turner	47	983	1.8	996	419	8,556	1.7	8,638	8.7
Union	25	523	1.0	530	106	2,164	0.4	2,185	4.1
Walworth	29	607	1.1	614	208	4,247	0.8	4,288	7.0
Ziebach	13	272	0.5	275	204	4,166	0.8	4,205	15.3
Oglala Lakota	2	42	0.1	42	4	82	0.0	82	2.0
Todd	2	42	0.1	42	0	0	0.0	0	0.0
Unk/Unreported	32	669	-	-	237	4,839	-	-	7.2
TOTALS:	2,574	53,846	100%	53,846	25,023	510,957	100%	510,957	9.49

Last Revised: 8 May 2023

* Includes unknown county projection values by assuming unknown county values are distributed the same as reported county values. Total values may be different due to rounding.

** Calculation uses "# projected" values without correction for unknown/unreported county values.

Nonresident Pheasant Harvest Distribution by County 2022

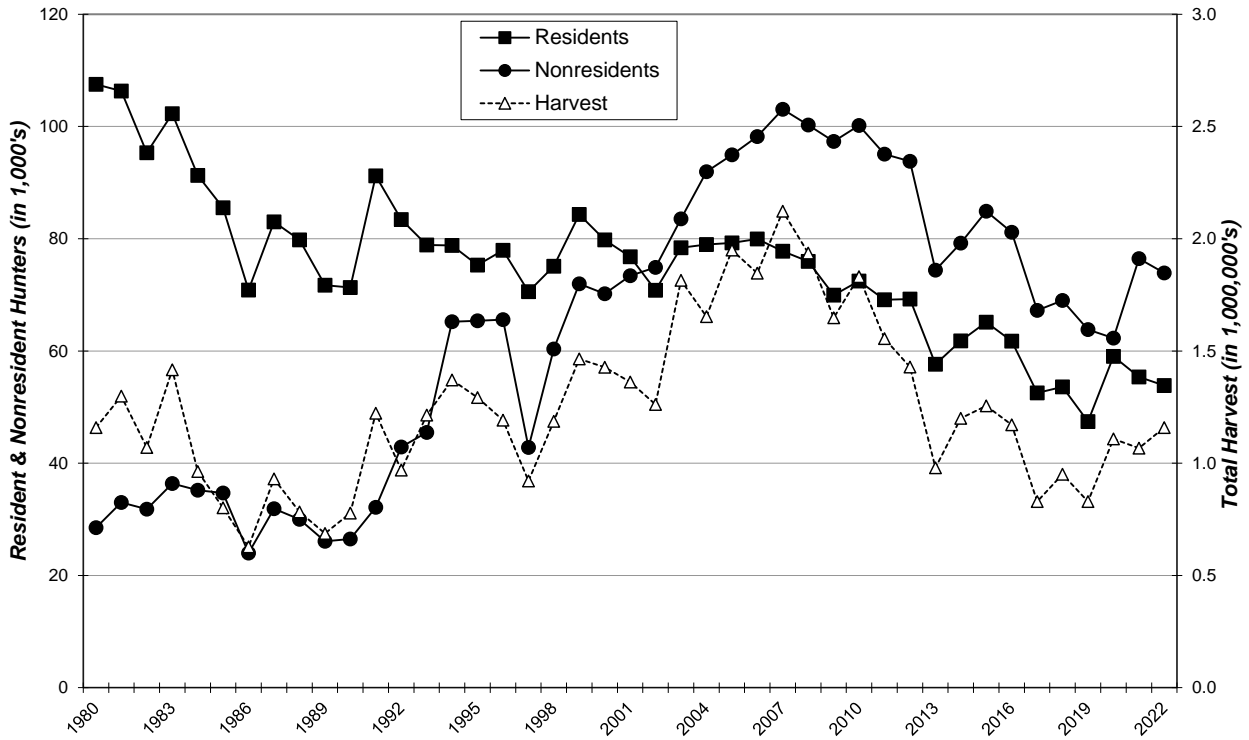
COUNTY	HUNTER DISTRIBUTION				HARVEST DISTRIBUTION				
	# Reported	# Projected	% of Total	# Proj w/ Unk *	# Reported	# Projected	% of Total	# Proj w/ Unk *	Birds/Hunter **
Minnehaha	19	310	0.4	331	88	1,426	0.2	1,512	4.6
Pennington	5	82	0.1	87	45	729	0.1	773	8.9
Brown	323	5,267	7.6	5,634	2,656	43,051	7.0	45,638	8.2
Beadle	229	3,734	5.4	3,994	2,066	33,488	5.5	35,500	9.0
Codington	46	750	1.1	802	285	4,620	0.8	4,897	6.2
Brookings	59	962	1.4	1,029	446	7,229	1.2	7,664	7.5
Yankton	19	310	0.4	331	106	1,718	0.3	1,821	5.5
Davison	92	1,500	2.2	1,605	774	12,546	2.1	13,300	8.4
Lawrence	2	33	0.0	35	9	146	0.0	155	4.5
Aurora	152	2,479	3.6	2,651	1,580	25,610	4.2	27,149	10.3
Bennett	19	310	0.4	331	128	2,075	0.3	2,199	6.7
Bon Homme	13	212	0.3	227	95	1,540	0.3	1,632	7.3
Brule	250	4,077	5.9	4,361	2,144	34,752	5.7	36,840	8.5
Buffalo	25	408	0.6	436	203	3,290	0.5	3,488	8.1
Butte	8	130	0.2	140	62	1,005	0.2	1,065	7.7
Campbell	71	1,158	1.7	1,238	733	11,881	1.9	12,595	10.3
Charles Mix	162	2,642	3.8	2,826	1,604	25,999	4.3	27,561	9.8
Clark	112	1,826	2.6	1,954	929	15,058	2.5	15,963	8.2
Clay	8	130	0.2	140	78	1,264	0.2	1,340	9.7
Corson	26	424	0.6	454	199	3,226	0.5	3,419	7.6
Custer	3	49	0.1	52	22	357	0.1	378	7.3
Day	87	1,419	2.1	1,518	490	7,942	1.3	8,420	5.6
Deuel	14	228	0.3	244	84	1,362	0.2	1,443	6.0
Dewey	55	897	1.3	959	464	7,521	1.2	7,973	8.4
Douglas	31	506	0.7	541	310	5,025	0.8	5,327	9.9
Edmunds	105	1,712	2.5	1,831	1,077	17,457	2.9	18,506	10.2
Fall River	5	82	0.1	87	16	259	0.0	275	3.2
Faulk	143	2,332	3.4	2,494	1,789	28,998	4.7	30,740	12.4
Grant	9	147	0.2	157	50	810	0.1	859	5.5
Gregory	167	2,723	3.9	2,913	1,576	25,545	4.2	27,080	9.4
Haakon	10	163	0.2	174	66	1,070	0.2	1,134	6.6
Hamlin	24	391	0.6	419	156	2,529	0.4	2,681	6.5
Hand	91	1,484	2.1	1,587	779	12,627	2.1	13,385	8.5
Hanson	28	457	0.7	488	188	3,047	0.5	3,230	6.7
Harding	12	196	0.3	209	69	1,118	0.2	1,186	5.7
Hughes	130	2,120	3.1	2,268	1,168	18,932	3.1	20,070	8.9
Hutchinson	74	1,207	1.7	1,291	648	10,503	1.7	11,134	8.7
Hyde	35	571	0.8	610	276	4,474	0.7	4,742	7.8
Jackson	9	147	0.2	157	85	1,378	0.2	1,461	9.4
Jerauld	55	897	1.3	959	591	9,580	1.6	10,155	10.7
Jones	60	978	1.4	1,047	565	9,158	1.5	9,708	9.4
Kingsbury	62	1,011	1.5	1,081	508	8,234	1.3	8,729	8.1
Lake	20	326	0.5	349	153	2,480	0.4	2,629	7.6
Lincoln	11	179	0.3	192	96	1,556	0.3	1,650	8.7
Lyman	198	3,229	4.7	3,454	1,824	29,565	4.8	31,342	9.2
McCook	21	342	0.5	366	124	2,010	0.3	2,131	5.9
McPherson	88	1,435	2.1	1,535	750	12,157	2.0	12,887	8.5
Marshall	41	669	1.0	715	351	5,689	0.9	6,031	8.5
Meade	7	114	0.2	122	70	1,135	0.2	1,203	9.9
Mellette	16	261	0.4	279	121	1,961	0.3	2,079	7.5
Miner	71	1,158	1.7	1,238	675	10,941	1.8	11,598	9.4
Moody	7	114	0.2	122	38	616	0.1	653	5.4
Perkins	48	783	1.1	837	398	6,451	1.1	6,839	8.2
Potter	87	1,419	2.1	1,518	990	16,047	2.6	17,011	11.3
Roberts	29	473	0.7	506	189	3,063	0.5	3,248	6.5
Sanborn	74	1,207	1.7	1,291	709	11,492	1.9	12,183	9.5
Spink	187	3,049	4.4	3,262	1,753	28,414	4.7	30,122	9.3
Stanley	50	815	1.2	872	448	7,262	1.2	7,698	8.9
Sully	74	1,207	1.7	1,291	740	11,995	2.0	12,715	9.9
Tripp	238	3,881	5.6	4,151	2,020	32,742	5.4	34,709	8.4
Turner	11	179	0.3	192	85	1,378	0.2	1,461	7.7
Union	7	114	0.2	122	53	859	0.1	911	7.5
Walworth	83	1,353	2.0	1,448	766	12,416	2.0	13,162	9.2
Ziebach	6	98	0.1	105	51	827	0.1	876	8.4
Oglala Lakota	3	49	0.1	52	25	405	0.1	430	8.3
Todd	10	163	0.2	174	62	1,005	0.2	1,065	6.2
Unk/Unreported	295	4,811	-	-	2,265	36,713	-	-	7.6
TOTALS	4,531	73,887	100%	73,887	39,963	647,759	100%	647,759	8.77

Last Revised: 8 May 2023

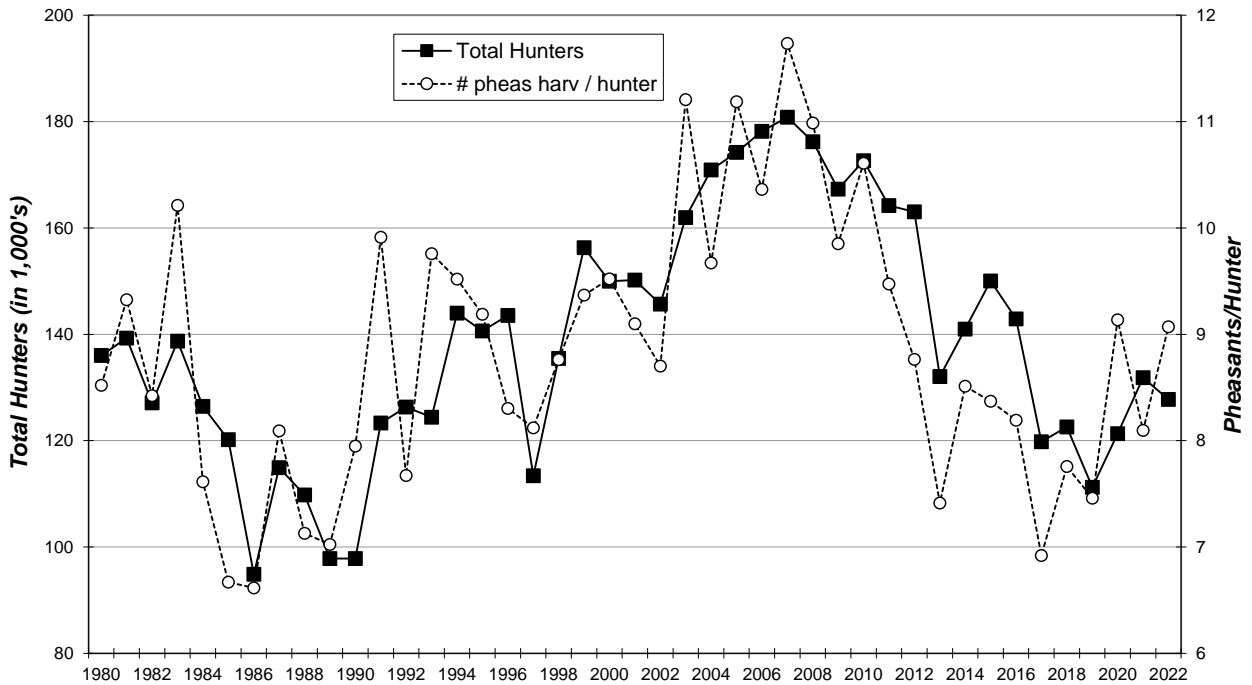
* Includes unknown county projection values by assuming unknown county values are distributed the same as reported county values. Total values may be different due to rounding.

** Calculation uses "# projected" values without correction for unknown/unreported county values.

SOUTH DAKOTA PHEASANT HARVEST 1980-2022



SOUTH DAKOTA PHEASANT HUNTERS AND AVERAGE SEASON HARVEST 1980-2022



2022 ESTIMATES OF PHEASANT HUNTING BY MONTH

Revised:
5/31/2023

	RESIDENT TOTALS BY LICENSE TYPE					NONRESIDENT TOTALS		
	Combo	Senior Combo	Small Game	Youth Sm Game	Sum Estimates	Nonres Sm Game	Youth Sm Game	Sum Estimates
Projected Days Pheasant Hunting	236,998	54,910	97,120	28,315	417,342	304,067	10,017	314,084
Projected No. Pheasant Hunters	28,945	6,117	14,477	4,307	53,846	71,184	2,704	73,887
Projected Pheasant Bag	302,090	62,022	120,447	26,398	510,957	630,030	17,729	647,759
	TOTAL PHEASANT HARVEST = 1,158,716							
Percent Reporting Pheasant Days October	68%	76%	69%	78%		49%	39%	
Percent Reporting Pheasant Days November	66%	69%	60%	57%		45%	59%	
Percent Reporting Pheasant Days December	42%	34%	37%	32%		18%	18%	
Percent Reporting Pheasant Days January	24%	15%	16%	15%		5%	8%	
Projected Pheasant Hunters October	19,768	4,623	9,935	3,362	37,688	35,066	1,064	36,130
Projected Pheasant Hunters November	19,129	4,239	8,645	2,445	34,458	31,722	1,596	33,318
Projected Pheasant Hunters December	12,256	2,077	5,363	1,362	21,057	13,138	488	13,625
Projected Pheasant Hunters January	6,873	939	2,315	667	10,794	3,296	222	3,518
Percent Pheasant Harvest October	36%	40%	41%	45%		44%	33%	
Percent Pheasant Harvest November	33%	36%	34%	31%		38%	54%	
Percent Pheasant Harvest December	21%	17%	18%	17%		15%	8%	
Percent Pheasant Harvest January	10%	6%	6%	7%		2%	5%	
Projected Pheasant Harvest October	109,033	25,076	49,681	11,779	195,569	277,136	5,776	282,913
Projected Pheasant Harvest November	100,684	22,490	41,528	8,214	172,916	240,261	9,553	249,814
Projected Pheasant Harvest December	62,613	10,504	22,189	4,511	99,818	97,462	1,466	98,929
Projected Pheasant Harvest January	29,759	3,952	7,049	1,894	42,654	15,171	933	16,104

Pheasant Harvest by Month

