

# **PRAIRIE CHICKEN & SHARP-TAILED GROUSE**

Historically, these two species, plus ruffed grouse, have been combined under the name "Prairie Grouse." In these reports, harvest estimates for these species were combined. In 2006, hunters were asked specifically how many of each species were harvested of the total harvest and 76% were identified as sharp-tailed grouse, 20% as prairie chickens, and 4% were unknown. They continue to be combined for the overall harvest estimates in this report.

The 2022 grouse season covered 17 September 2022 – 1 January 2023 statewide. Harvest surveys were sent to both resident and nonresident hunters. The daily limit was 3 birds, possession 15. To hunt grouse residents required to hold small game, 1-day small game, adult or senior combination, or youth small game licenses; nonresidents were required to obtain adult or youth small game or nonresident shooting preserve licenses. Harvest surveys were sent to both resident and nonresident hunters. No shooting preserve license holders were surveyed and none of their harvest is included in any of the data in this report.

In 2022, there were 83,430 resident and 78,987 nonresident licenses issued that allowed holders to hunt grouse. Approximately 15,000 residents and 15,000 nonresidents were surveyed for the upland bird seasons. Survey response rates were 28% for residents and 32% for nonresidents.

Based on survey responses indicating at least one day of hunting grouse, there were a projected 9,149 resident and 7,616 nonresident grouse hunters. A projected total of 63,617 grouse were harvested (40,263 by residents, 23,354 by nonresidents) during the 2022 season.

When asked their satisfaction on the season, (1 being very dissatisfied, and 7 being very satisfied), resident upland bird hunters reported an average rating of 5.09 while nonresidents reported a rating of 5.85.

## Comparison of the 2013 - 2022 prairie grouse season statistics

Year	Residents					Nonresidents				
	Hunters	Harvest	Ave Day Hunted	Ave Bag	Satisfaction	Hunters	Harvest	Ave Day Hunted	Ave Bag	Satisfaction
2013	7,149	19,858	4.28	2.76	4.11	4,523	7,840	3.87	1.73	4.95
2014	6,503	25,847	4.55	4.01	4.85	4,254	9,943	3.99	2.31	5.52
2015	7,866	34,506	4.72	4.40	4.98	5,032	15,388	4.05	3.08	5.49
2016	7,199	31,611	4.88	4.40	4.72	5,203	11,294	4.04	2.18	5.43
2017	5,703	15,863	4.57	2.80	4.23	3,645	6,290	3.81	1.73	5.06
2018	5,868	16,431	4.36	2.83	4.64	3,979	7,429	4.08	1.87	5.38
2019	5,583	18,601	4.45	3.33	4.67	4,637	11,452	3.74	2.47	5.28
2020	10,487	48,947	5.14	4.78	5.06	6,389	18,314	4.33	2.88	5.75
2021	8,680	36,583	5.55	4.28	4.75	6,597	16,636	4.22	2.53	5.38
2022	9,149	40,263	5.53	4.46	5.09	7,616	23,354	3.97	3.10	5.85

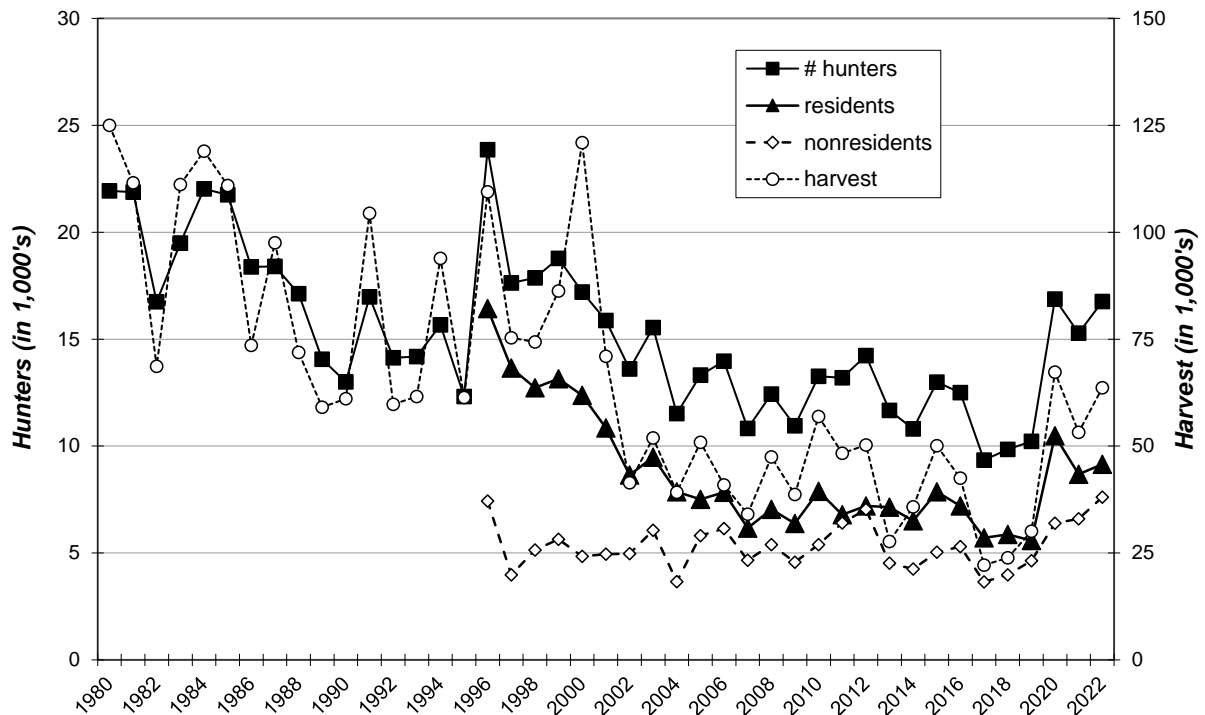
## PRAIRIE GROUSE HARVEST PROJECTIONS FOR 2022

Revised:  
5/8/2023

	RESIDENT TOTALS BY LICENSE TYPE					NONRESIDENT TOTALS		
	Combo	Senior Combo	Small Game	Youth SmGm	Sum Estimates	Nonres Sm Game	Youth Sm Game	Sum Estimates
<b>Licenses Sold</b>	47,570	11,366	18,492	6,002	<b>83,430</b>	76,073	2,914	<b>78,987</b>
<b>Projected ACTIVE UPLAND BIRD HUNTERS</b>	<b>29,351</b>	<b>6,273</b>	<b>14,624</b>	<b>4,390</b>	<b>54,639</b>	<b>71,980</b>	<b>2,748</b>	<b>74,728</b>
Number Sampled by Survey	8,810	1,837	3,118	1,092	<b>14,857</b>	14,380	515	<b>14,895</b>
Number Responded to Survey	2,457	799	631	216	<b>4,103</b>	4,663	65	<b>4,728</b>
% Responded and Participated in Season	62%	55%	79%	73%	<b>64%</b>	97%	95%	<b>97%</b>
Responded and Participated in Season	1,516	441	499	158	<b>2,614</b>	4,520	62	<b>4,582</b>
Responded but DID NOT HUNT	941	358	132	58	<b>1,489</b>	143	3	<b>146</b>
<b>Survey Response Rate</b>	<b>27.9%</b>	<b>43.5%</b>	<b>20.2%</b>	<b>19.8%</b>	<b>27.6%</b>	<b>32.4%</b>	<b>12.6%</b>	<b>31.7%</b>
No. Hunters Reporting Prairie Grouse Days	308	80	49	22	<b>459</b>	456	8	<b>464</b>
Sum Prairie Grouse Hunted Days	1,677	484	272	103	<b>2,536</b>	1,812	29	<b>1,841</b>
Average Days Hunted Prairie Grouse	<b>5.44</b>	<b>6.05</b>	<b>5.55</b>	<b>4.68</b>	<b>5.53</b>	<b>3.97</b>	<b>3.63</b>	<b>3.97</b>
Sum Prairie Grouse Bagged	1,351	409	188	100	<b>2,048</b>	1,422	16	<b>1,438</b>
Average Season Prairie Grouse Bag	<b>4.39</b>	<b>5.11</b>	<b>3.84</b>	<b>4.55</b>	<b>4.46</b>	<b>3.12</b>	<b>2.00</b>	<b>3.10</b>
<b>Projected Days Prairie Grouse Hunting</b>	<b>32,468</b>	<b>6,885</b>	<b>7,971</b>	<b>2,862</b>	<b>50,187</b>	<b>28,856</b>	<b>1,285</b>	<b>30,141</b>
<b>Projected No. Prairie Grouse Hunters</b>	<b>5,963</b>	<b>1,138</b>	<b>1,436</b>	<b>611</b>	<b>9,149</b>	<b>7,262</b>	<b>355</b>	<b>7,616</b>
<b>Projected Prairie Grouse Bag</b>	<b>26,157</b>	<b>5,818</b>	<b>5,510</b>	<b>2,779</b>	<b>40,263</b>	<b>22,645</b>	<b>709</b>	<b>23,354</b>
					<b>TOTAL PRAIRIE GROUSE HARVEST =</b>	<b>63,617</b>		
<b>Upland Bird Hunters Mean Satisfaction Score *</b>	5.12	4.79	5.27	5.05	5.09	5.85	5.52	5.85

\* Based on scale of 1-7 with 1="very dissatisfied" and 7="very satisfied"

## PRAIRIE GROUSE HUNTERS & HARVEST 1980-2022



## Resident Grouse Harvest Distribution by County 2022

COUNTY	HUNTER DISTRIBUTION				HARVEST DISTRIBUTION				Birds/Hunter
	# Reported	# Projected	% of Total	# Proj w/ Unk *	# Reported	# Projected	% of Total	# Proj w/ Unk *	
Minnehaha	0	0	0.0	0	0	0	0.0	0	0
Pennington	25	498	5.7	520	120	2,359	6.0	2,406	4.7
Brown	1	20	0.2	21	0	0	0.0	0	0.0
Beadle	1	20	0.2	21	0	0	0.0	0	0.0
Codington	2	40	0.5	42	10	197	0.5	201	4.9
Brookings	0	0	0.0	0	0	0	0.0	0	0
Yankton	0	0	0.0	0	0	0	0.0	0	0
Davison	1	20	0.2	21	1	20	0.0	20	1.0
Lawrence	0	0	0.0	0	0	0	0.0	0	0
Aurora	1	20	0.2	21	0	0	0.0	0	0.0
Bennett	16	319	3.6	333	59	1,160	2.9	1,183	3.6
Bon Homme	1	20	0.2	21	0	0	0.0	0	0.0
Brule	5	100	1.1	104	67	1,317	3.3	1,343	13.2
Buffalo	4	80	0.9	83	20	393	1.0	401	4.9
Butte	8	159	1.8	166	57	1,121	2.8	1,143	7.0
Campbell	3	60	0.7	62	5	98	0.2	100	1.6
Charles Mix	2	40	0.5	42	0	0	0.0	0	0.0
Clark	1	20	0.2	21	0	0	0.0	0	0.0
Clay	1	20	0.2	21	0	0	0.0	0	0.0
Corson	18	359	4.1	374	115	2,261	5.7	2,306	6.3
Custer	6	120	1.4	125	7	138	0.3	140	1.2
Day	4	80	0.9	83	2	39	0.1	40	0.5
Deuel	2	40	0.5	42	5	98	0.2	100	2.5
Dewey	20	399	4.5	416	142	2,792	7.1	2,847	7.0
Douglas	0	0	0.0	0	0	0	0.0	0	0
Edmunds	1	20	0.2	21	9	177	0.4	180	8.9
Fall River	12	239	2.7	250	35	688	1.7	702	2.9
Faulk	0	0	0.0	0	0	0	0.0	0	0
Grant	3	60	0.7	62	3	59	0.1	60	1.0
Gregory	8	159	1.8	166	23	452	1.1	461	2.8
Haakon	16	319	3.6	333	68	1,337	3.4	1,363	4.2
Hamlin	0	0	0.0	0	0	0	0.0	0	0
Hand	3	60	0.7	62	9	177	0.4	180	3.0
Hanson	0	0	0.0	0	0	0	0.0	0	0
Harding	11	219	2.5	229	74	1,455	3.7	1,484	6.6
Hughes	11	219	2.5	229	56	1,101	2.8	1,123	5.0
Hutchinson	0	0	0.0	0	0	0	0.0	0	0
Hyde	2	40	0.5	42	4	79	0.2	80	2.0
Jackson	5	100	1.1	104	13	256	0.6	261	2.6
Jerauld	2	40	0.5	42	3	59	0.1	60	1.5
Jones	14	279	3.2	291	31	609	1.5	622	2.2
Kingsbury	0	0	0.0	0	0	0	0.0	0	0
Lake	0	0	0.0	0	0	0	0.0	0	0
Lincoln	0	0	0.0	0	0	0	0.0	0	0
Lyman	28	558	6.4	582	105	2,064	5.2	2,105	3.7
McCook	0	0	0.0	0	0	0	0.0	0	0
McPherson	7	140	1.6	146	36	708	1.8	722	5.1
Marshall	4	80	0.9	83	22	433	1.1	441	5.4
Meade	28	558	6.4	582	136	2,674	6.8	2,727	4.8
Mellette	15	299	3.4	312	48	944	2.4	962	3.2
Miner	0	0	0.0	0	0	0	0.0	0	0
Moody	0	0	0.0	0	0	0	0.0	0	0
Perkins	50	997	11.4	1,040	300	5,898	14.9	6,015	5.9
Potter	5	100	1.1	104	27	531	1.3	541	5.3
Roberts	3	60	0.7	62	3	59	0.1	60	1.0
Sanborn	1	20	0.2	21	1	20	0.0	20	1.0
Spink	0	0	0.0	0	0	0	0.0	0	0
Stanley	35	698	8.0	728	189	3,716	9.4	3,790	5.3
Sully	5	100	1.1	104	14	275	0.7	281	2.8
Tripp	22	438	5.0	457	90	1,769	4.5	1,805	4.0
Turner	0	0	0.0	0	0	0	0.0	0	0
Union	0	0	0.0	0	0	0	0.0	0	0
Walworth	3	60	0.7	62	5	98	0.2	100	1.6
Ziebach	16	319	3.6	333	72	1,415	3.6	1,444	4.4
Oglala Lakota	1	20	0.2	21	0	0	0.0	0	0.0
Todd	7	140	1.6	146	22	433	1.1	441	3.1
Unknown	19	379	-	-	40	786	-	-	2.1
<b>TOTALS:</b>	<b>459</b>	<b>9,149</b>	<b>100.0%</b>	<b>9,149</b>	<b>2,048</b>	<b>40,263</b>	<b>100%</b>	<b>40,263</b>	<b>4.40</b>

Last Revised: 24 May 2023

\* Includes unknown county projection values by assuming unknown county values are distributed the same as reported county values. Total values may be different due to rounding.

\*\* Calculation uses "#projected" values without correction for unknown/unreported county values.

## Nonresident Grouse Harvest Distribution by County 2022

COUNTY	HUNTER DISTRIBUTION				HARVEST DISTRIBUTION				Birds/Hunter
	# Reported	# Projected	% of Total	# Proj w/ Unk *	# Reported	# Projected	% of Total	# Proj w/ Unk *	
Minnehaha	0	0	0.0	0	0	0	0.0	0	0
Pennington	2	33	0.5	36	19	309	1.5	345	9.4
Brown	2	33	0.5	36	6	97	0.5	109	3.0
Beadle	1	16	0.2	18	0	0	0.0	0	0.0
Codington	0	0	0.0	0	0	0	0.0	0	0
Brookings	1	16	0.2	18	0	0	0.0	0	0.0
Yankton	0	0	0.0	0	0	0	0.0	0	0
Davison	3	49	0.7	53	10	162	0.8	181	3.3
Lawrence	1	16	0.2	18	0	0	0.0	0	0.0
Aurora	1	16	0.2	18	0	0	0.0	0	0.0
Bennett	10	164	2.3	178	22	357	1.7	399	2.2
Bon Homme	0	0	0.0	0	0	0	0.0	0	0
Brule	14	230	3.3	249	21	341	1.6	381	1.5
Buffalo	4	66	0.9	71	8	130	0.6	145	2.0
Butte	1	16	0.2	18	8	130	0.6	145	7.9
Campbell	9	148	2.1	160	14	227	1.1	254	1.5
Chas Mix	2	33	0.5	36	2	32	0.2	36	1.0
Clark	0	0	0.0	0	0	0	0.0	0	0
Clay	0	0	0.0	0	0	0	0.0	0	0
Corson	19	312	4.4	338	83	1,348	6.4	1,505	4.3
Custer	1	16	0.2	18	2	32	0.2	36	2.0
Day	1	16	0.2	18	1	16	0.1	18	1.0
Deuel	0	0	0.0	0	0	0	0.0	0	0
Dewey	33	542	7.7	587	156	2,534	12.1	2,829	4.7
Douglas	1	16	0.2	18	0	0	0.0	0	0.0
Edmunds	6	98	1.4	107	5	81	0.4	91	0.8
Fall River	3	49	0.7	53	2	32	0.2	36	0.7
Faulk	3	49	0.7	53	2	32	0.2	36	0.7
Grant	0	0	0.0	0	0	0	0.0	0	0
Gregory	6	98	1.4	107	14	227	1.1	254	2.3
Haakon	9	148	2.1	160	52	845	4.0	943	5.7
Hamlin	0	0	0.0	0	0	0	0.0	0	0
Hand	8	131	1.9	142	20	325	1.6	363	2.5
Hanson	0	0	0.0	0	0	0	0.0	0	0
Harding	3	49	0.7	53	3	49	0.2	54	1.0
Hughes	20	328	4.7	356	44	715	3.4	798	2.2
Hutchinson	3	49	0.7	53	1	16	0.1	18	0.3
Hyde	2	33	0.5	36	6	97	0.5	109	3.0
Jackson	3	49	0.7	53	6	97	0.5	109	2.0
Jerauld	4	66	0.9	71	7	114	0.5	127	1.7
Jones	24	394	5.6	427	57	926	4.4	1,034	2.3
Kingsbury	0	0	0.0	0	0	0	0.0	0	0
Lake	0	0	0.0	0	0	0	0.0	0	0
Lincoln	1	16	0.2	18	10	162	0.8	181	9.9
Lyman	52	854	12.1	925	126	2,046	9.8	2,285	2.4
McCook	0	0	0.0	0	0	0	0.0	0	0
McPherson	10	164	2.3	178	12	195	0.9	218	1.2
Marshall	1	16	0.2	18	0	0	0.0	0	0.0
Meade	3	49	0.7	53	13	211	1.0	236	4.3
Mellette	2	33	0.5	36	17	276	1.3	308	8.4
Miner	0	0	0.0	0	0	0	0.0	0	0
Moody	0	0	0.0	0	0	0	0.0	0	0
Perkins	25	410	5.8	445	140	2,274	10.9	2,538	5.5
Potter	7	115	1.6	125	16	260	1.2	290	2.3
Roberts	1	16	0.2	18	2	32	0.2	36	2.0
Sanborn	1	16	0.2	18	0	0	0.0	0	0.0
Spink	1	16	0.2	18	1	16	0.1	18	1.0
Stanley	51	837	11.9	908	205	3,329	15.9	3,717	4.0
Sully	7	115	1.6	125	6	97	0.5	109	0.8
Tripp	43	706	10.0	765	101	1,640	7.8	1,831	2.3
Turner	0	0	0.0	0	0	0	0.0	0	0
Union	0	0	0.0	0	0	0	0.0	0	0
Walworth	13	213	3.0	231	18	292	1.4	326	1.4
Ziebach	5	82	1.2	89	28	455	2.2	508	5.5
Oglala Lakota	0	0	0.0	0	0	0	0.0	0	0
Todd	5	82	1.2	89	22	357	1.7	399	4.4
Unknown	36	591	-	-	150	2,436	-	-	4.1
<b>TOTALS:</b>	<b>464</b>	<b>7,616</b>	<b>100%</b>	<b>7,616</b>	<b>1,438</b>	<b>23,354</b>	<b>100%</b>	<b>23,354</b>	<b>3.07</b>

Last Revised: 24 May 2023

\* Includes unknown county projection values by assuming unknown county values are distributed the same as reported county values. Total values may be different due to rounding.

\*\* Calculation uses "# projected" values without correction for unknown/unreported county values.