

DUCKS (all species)

The 2022 duck season was open 24 September 2022 - 12 January 2023 statewide, although some units/zones may have opened later and/or closed sooner. A special Youth Waterfowl season was open 10-11 September for youth that had not reached age 18 by the first day of the season. For the Traditional bag option, the daily limit was 6 ducks (including mergansers), which could include no more than 5 mallards (up to 2 hens), 1 scaup, 2 redheads, 3 wood ducks, 2 canvasbacks, or 1 pintail. Hunters could also harvest 2 bonus blue-winged teal daily during the first 16 days of the season. The daily limit on coots was 15. For the 3-Duck bag option, the daily limit was 3 ducks of any species or sex, including mergansers. The possession limit was three times the daily bag for each species. To hunt ducks, residents were required to hold small game, 1-day small game, adult, senior or junior combination, or youth small game licenses plus a migratory bird certification. Nonresidents were required to obtain a nonresident waterfowl license plus a migratory bird certification. All hunters aged 16 and over were also required to obtain a federal waterfowl stamp.

In 2022, there were an estimated 14,684 hunters who hunted at least one day for ducks (10,417 residents, 4,267 nonresidents). From the survey responses, there were a projected total of 210,255 ducks harvested (158,173 by residents, 52,082 by nonresidents). Nonresidents reported harvesting 8% of their ducks within 20 miles of the Missouri River. Average bag for residents was 15.18, and for nonresidents ranged from 6.10 in unit 00X to 13.97 in unit 00A.

The five counties with the highest reported resident hunter numbers were Clark, Day, Codington, Brookings, and Kingsbury. The five counties with the highest reported unit 00B nonresident hunter numbers were Day, Brown, Clark, Marshall, and Roberts.

When asked their satisfaction on the season, (1 being most dissatisfied, 7 being most satisfied), duck hunters reported an average satisfaction rating of 5.10 for residents and 5.40 for nonresidents.

The average days hunted by all hunters (7.40 residents, 4.34 nonresidents) projected to a total of 95,585 recreation days for the season.

Comparison of the 2017 - 2022 duck season statistics

Year	Resident Hunters					Nonresident Hunters				
	Number Hunters	Harvest	Ave Day Hunted	Ave Bag	Satisfaction	Number Hunters	Harvest	Ave Day Hunted	Ave Bag	Satisfaction
2017	10,557	143,976	6.90	13.64	5.05	4,159	45,344	4.31	10.90	5.14
2018	10,271	134,307	6.88	13.08	4.99	4,051	41,515	4.31	10.25	5.11
2019	11,295	176,885	7.30	15.66	5.17	4,423	52,225	4.47	11.81	5.38
2020	12,285	190,515	7.75	15.51	5.15	4,274	51,169	4.36	11.97	5.38
2021	10,634	151,207	7.37	14.22	5.10	4,442	47,802	4.28	10.76	5.18
2022	10,417	158,173	7.40	15.18	5.10	4,267	52,082	4.34	12.21	5.40

DUCK HUNTING SUMMARY FOR 2022

Revised: 1 June 2023

	NONRESIDENT TOTALS BY UNIT									NR Totals	Resident Total
	00A	00B	11A	00V	00X	00Y	00Z	YW1	Totals		
No. Hunters Reporting Duck Days	71	1,375	5	124	42	147	49			1,813	1,457
Total Reported Duck Hunted Days	506	6,525	23	341	123	405	115			8,038	10,777
Average Days Hunted Ducks	7.13	4.75	4.60	2.75	2.93	2.76	2.35			4.34	7.40
Total Reported Ducks Bagged	992	18,647	67	1,108	256	1,206	311			22,587	22,123
Average Duck Bag for Season	13.97	13.56	13.40	8.94	6.10	8.20	6.35			12.21	15.18
Projected Days Duck Hunting	1,156	14,501	61	974	395	1,099	346			18,533	77,053
Projected No. Duck Hunters	162	3,056	13	354	135	399	148			4,267	10,417
Projected Duck Bag	2,266	41,440	179	3,164	823	3,273	937			52,082	158,173
Duck Harvest Reported Within 20 Miles of Missouri River	894	721	0	89	70	12	8			1,794	894
Projected Ducks Bagged w/in 20 miles of Missouri River	2,042	1,602	0	254	225	33	24			4,180	N/A
TOTAL DUCK HARVEST = 210,255											
Duck Hunter Mean Satisfaction Score *1*	5.23	5.43	4.00	5.54	5.00	5.38	4.96			5.40	5.10

1 Based on scale of 1-7 with 1=very dissatisfied & 7=very satisfied

Resident Duck Harvest Distribution by County 2022

COUNTY	HUNTER DISTRIBUTION				HARVEST DISTRIBUTION				Birds/Hunter **
	# Reported	# Projected	% of Total	# Proj w/ Unk *	# Reported	# Projected	% of Total	# Proj w/ Unk *	
Minnehaha	50	357	3.5	362	413	2,953	1.9	2,997	8.3
Pennington	19	136	1.3	138	322	2,302	1.5	2,337	16.9
Brown	89	636	6.2	645	1,813	12,962	8.3	13,156	20.4
Beadle	31	222	2.2	225	311	2,224	1.4	2,257	10.0
Codington	81	579	5.6	587	1,212	8,665	5.6	8,795	15.0
Brookings	82	586	5.7	594	1,466	10,481	6.7	10,638	17.9
Yankton	18	129	1.3	130	299	2,138	1.4	2,170	16.6
Davison	10	71	0.7	72	117	837	0.5	849	11.7
Lawrence	6	43	0.4	43	26	186	0.1	189	4.3
Aurora	28	200	1.9	203	376	2,688	1.7	2,729	13.4
Bennett	5	36	0.3	36	165	1,180	0.8	1,197	33.0
Bon Homme	25	179	1.7	181	495	3,539	2.3	3,592	19.8
Brule	27	193	1.9	196	263	1,880	1.2	1,909	9.7
Buffalo	0	0	0.0	0	0	0	0.0	0	0
Butte	17	122	1.2	123	126	901	0.6	914	7.4
Campbell	9	64	0.6	65	219	1,566	1.0	1,589	24.3
Charles Mix	24	172	1.7	174	228	1,630	1.0	1,655	9.5
Clark	83	593	5.8	602	1,512	10,810	6.9	10,972	18.2
Clay	14	100	1.0	101	292	2,088	1.3	2,119	20.9
Corson	2	14	0.1	14	5	36	0.0	36	2.5
Custer	3	21	0.2	22	14	100	0.1	102	4.7
Day	97	694	6.8	703	2,145	15,336	9.8	15,566	22.1
Deuel	29	207	2.0	210	484	3,460	2.2	3,512	16.7
Dewey	1	7	0.1	7	15	107	0.1	109	15.0
Douglas	6	43	0.4	43	149	1,065	0.7	1,081	24.8
Edmunds	41	293	2.9	297	581	4,154	2.7	4,216	14.2
Fall River	31	222	2.2	225	241	1,723	1.1	1,749	7.8
Faulk	18	129	1.3	130	221	1,580	1.0	1,604	12.3
Grant	11	79	0.8	80	85	608	0.4	617	7.7
Gregory	0	0	0.0	0	0	0	0.0	0	0
Haakon	3	21	0.2	22	17	122	0.1	123	5.7
Hamlin	44	315	3.1	319	752	5,377	3.5	5,457	17.1
Hand	19	136	1.3	138	358	2,560	1.6	2,598	18.8
Hanson	8	57	0.6	58	60	429	0.3	435	7.5
Harding	4	29	0.3	29	9	64	0.0	65	2.3
Hughes	22	157	1.5	159	318	2,274	1.5	2,308	14.5
Hutchinson	8	57	0.6	58	87	622	0.4	631	10.9
Hyde	10	71	0.7	72	155	1,108	0.7	1,125	15.5
Jackson	1	7	0.1	7	0	0	0.0	0	0.0
Jerauld	4	29	0.3	29	18	129	0.1	131	4.5
Jones	2	14	0.1	14	14	100	0.1	102	7.0
Kingsbury	87	622	6.1	631	1,441	10,303	6.6	10,457	16.6
Lake	65	465	4.5	471	885	6,328	4.1	6,422	13.6
Lincoln	20	143	1.4	145	227	1,623	1.0	1,647	11.4
Lyman	6	43	0.4	43	28	200	0.1	203	4.7
McCook	48	343	3.3	348	548	3,918	2.5	3,977	11.4
McPherson	28	200	1.9	203	363	2,595	1.7	2,634	13.0
Marshall	38	272	2.6	275	735	5,255	3.4	5,334	19.3
Meade	13	93	0.9	94	85	608	0.4	617	6.5
Mellette	0	0	0.0	0	0	0	0.0	0	0
Miner	17	122	1.2	123	245	1,752	1.1	1,778	14.4
Moody	16	114	1.1	116	184	1,316	0.8	1,335	11.5
Perkins	10	71	0.7	72	47	336	0.2	341	4.7
Potter	10	71	0.7	72	158	1,130	0.7	1,147	15.8
Roberts	37	265	2.6	268	652	4,662	3.0	4,731	17.6
Sanborn	8	57	0.6	58	95	679	0.4	689	11.9
Spink	19	136	1.3	138	355	2,538	1.6	2,576	18.7
Stanley	4	29	0.3	29	55	393	0.3	399	13.8
Sully	14	100	1.0	101	167	1,194	0.8	1,212	11.9
Tripp	2	14	0.1	14	28	200	0.1	203	14.0
Turner	5	36	0.3	36	51	365	0.2	370	10.2
Union	4	29	0.3	29	52	372	0.2	377	13.0
Walworth	3	21	0.2	22	11	79	0.1	80	3.7
Ziebach	0	0	0.0	0	0	0	0.0	0	0
Oglala Lakota	1	7	0.1	7	2	14	0.0	15	2.0
Todd	0	0	0.0	0	0	0	0.0	0	0
Unk/Unreported	20	143	-	-	326	2,331	-	-	16.3
TOTALS:	1,457	10,417	100%	10,417	22,123	158,173	100%	158,173	15.18

Last Revised: 29 June 2023

* Includes unknown county projection values by assuming unknown county values are distributed the same as reported county values. Total values may be different due to rounding.

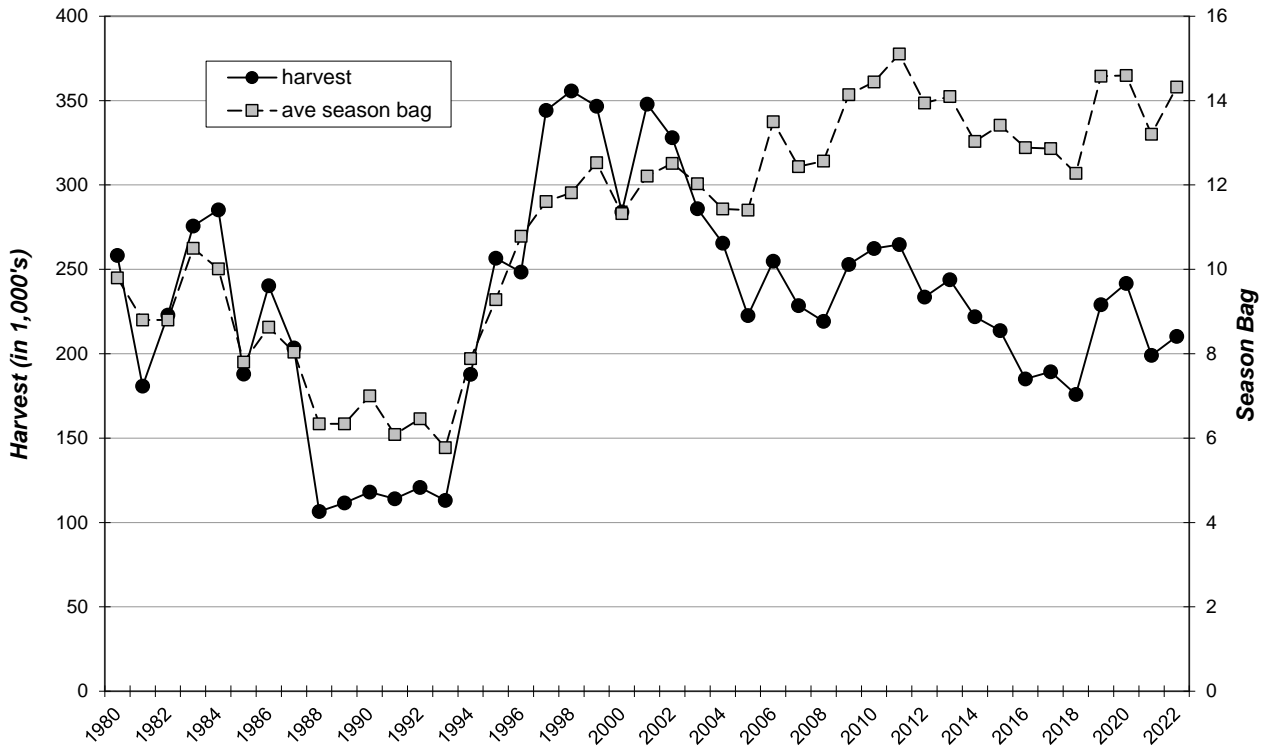
** Calculation uses "# projected" values without correction for unknown/unreported county values.

**2022 Reported Nonresident Duck Hunting
Distribution by County**

COUNTY	00A	00B	00V	00X	00Y	00Z	11A	00B PERCENT	00V PERCENT	00Y PERCENT
Minnehaha	0	6	0	0	0	0	0	0.5%	0.0%	0.0%
Pennington	0	0	0	0	0	0	0	0.0%	0.0%	0.0%
Brown	0	111	54	2	0	0	0	8.5%	49.1%	0.0%
Beadle	0	23	2	0	0	4	0	1.8%	1.8%	0.0%
Codington	0	49	0	0	8	0	0	3.7%	0.0%	5.9%
Brookings	0	33	0	2	0	2	0	2.5%	0.0%	0.0%
Yankton	13	4	0	0	0	0	0	0.3%	0.0%	0.0%
Davison	0	4	0	0	0	2	0	0.3%	0.0%	0.0%
Lawrence	0	3	0	0	0	3	0	0.2%	0.0%	0.0%
Aurora	0	21	0	0	0	4	0	1.6%	0.0%	0.0%
Bennett	0	1	0	1	0	0	5	0.1%	0.0%	0.0%
Bon Homme	34	0	0	0	0	1	0	0.0%	0.0%	0.0%
Brule	0	34	0	2	0	5	0	2.6%	0.0%	0.0%
Buffalo	0	3	0	0	0	0	0	0.2%	0.0%	0.0%
Butte	0	2	1	0	0	1	0	0.2%	0.9%	0.0%
Campbell	0	12	6	0	0	0	0	0.9%	5.5%	0.0%
Charles Mix	12	4	0	0	0	0	0	0.3%	0.0%	0.0%
Clark	0	122	0	0	26	0	0	9.3%	0.0%	19.1%
Clay	2	3	0	0	1	0	0	0.2%	0.0%	0.7%
Corson	0	2	0	0	0	0	0	0.2%	0.0%	0.0%
Custer	0	0	0	0	0	0	0	0.0%	0.0%	0.0%
Day	0	332	0	0	50	0	0	25.4%	0.0%	36.8%
Deuel	0	9	0	0	4	0	0	0.7%	0.0%	2.9%
Dewey	0	2	0	0	0	0	0	0.2%	0.0%	0.0%
Douglas	1	10	0	0	1	1	0	0.8%	0.0%	0.7%
Edmunds	0	61	20	0	0	0	0	4.7%	18.2%	0.0%
Fall River	0	0	0	0	0	0	0	0.0%	0.0%	0.0%
Faulk	0	38	8	0	0	0	0	2.9%	7.3%	0.0%
Grant	0	2	0	0	0	0	0	0.2%	0.0%	0.0%
Gregory	0	2	0	0	0	1	0	0.2%	0.0%	0.0%
Haakon	0	0	1	0	0	0	0	0.0%	0.9%	0.0%
Hamlin	0	19	1	0	1	0	0	1.5%	0.9%	0.7%
Hand	0	19	0	0	0	3	0	1.5%	0.0%	0.0%
Hanson	0	1	0	0	0	0	0	0.1%	0.0%	0.0%
Harding	0	0	0	0	0	0	0	0.0%	0.0%	0.0%
Hughes	0	4	0	5	0	0	0	0.3%	0.0%	0.0%
Hutchinson	0	0	0	0	0	0	0	0.0%	0.0%	0.0%
Hyde	0	3	0	0	0	2	0	0.2%	0.0%	0.0%
Jackson	0	0	0	0	1	1	0	0.0%	0.0%	0.7%
Jerauld	0	5	0	0	0	0	0	0.4%	0.0%	0.0%
Jones	0	0	0	0	0	0	0	0.0%	0.0%	0.0%
Kingsbury	0	37	0	2	0	8	0	2.8%	0.0%	0.0%
Lake	0	5	0	1	0	1	0	0.4%	0.0%	0.0%
Lincoln	0	0	0	0	0	0	0	0.0%	0.0%	0.0%
Lyman	0	2	0	4	0	0	0	0.2%	0.0%	0.0%
McCook	0	3	0	0	0	2	0	0.2%	0.0%	0.0%
McPherson	0	60	10	1	1	0	0	4.6%	9.1%	0.7%
Marshall	0	82	0	0	18	0	0	6.3%	0.0%	13.2%
Meade	0	0	0	0	0	0	0	0.0%	0.0%	0.0%
Mellette	0	0	0	0	0	0	0	0.0%	0.0%	0.0%
Miner	0	17	0	1	0	3	0	1.3%	0.0%	0.0%
Moody	0	1	0	0	0	0	0	0.1%	0.0%	0.0%
Perkins	0	3	0	0	0	0	0	0.2%	0.0%	0.0%
Potter	0	5	1	8	0	0	0	0.4%	0.9%	0.0%
Roberts	0	95	0	1	21	0	0	7.3%	0.0%	15.4%
Sanborn	0	7	0	0	0	2	0	0.5%	0.0%	0.0%
Spink	0	27	0	0	3	0	0	2.1%	0.0%	2.2%
Stanley	0	0	0	1	0	0	0	0.0%	0.0%	0.0%
Sully	0	2	0	8	0	0	0	0.2%	0.0%	0.0%
Tripp	0	0	0	0	0	0	0	0.0%	0.0%	0.0%
Turner	0	0	0	0	0	1	0	0.0%	0.0%	0.0%
Union	7	1	0	0	0	0	0	0.1%	0.0%	0.0%
Walworth	0	16	6	0	0	0	0	1.2%	5.5%	0.0%
Ziebach	0	1	0	0	0	0	0	0.1%	0.0%	0.0%
Oglala Lakota	0	0	0	0	0	0	0	0.0%	0.0%	0.0%
Todd	0	0	0	1	1	0	0	0.0%	0.0%	0.7%
TOTALS:	69	1,308	110	40	136	47	5	100.0%	100.0%	100.0%

Last updated: 29 June 2023

STATEWIDE DUCK (all species) HARVEST, 1980-2022



STATEWIDE DUCK SEASON PARTICIPATION, 1980-2022

