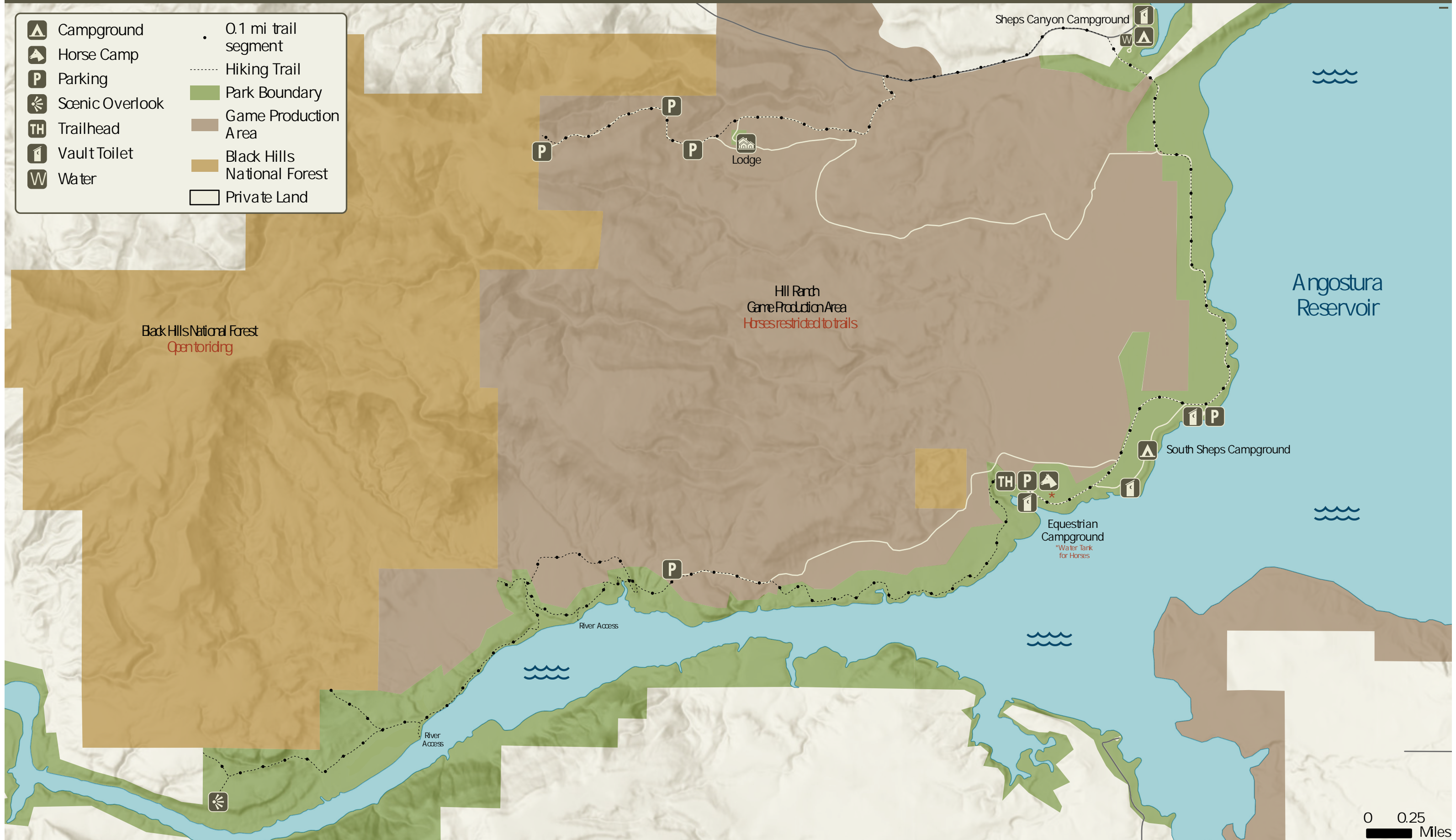




SHEPS CANYON RECREATION AREA EQUESTRIAN TRAIL SYSTEM

- Campground
- Horse Camp
- Parking
- Scenic Overlook
- Trailhead
- Vault Toilet
- Water
- 0.1 mi trail segment
- Hiking Trail
- Park Boundary
- Game Production Area
- Black Hills National Forest
- Private Land



0 0.25 Miles

Distance: 12.1 Miles | Difficulty: Moderate | Surface: Natural

Angostura@state.sd.us | 605.745.6996

Make reservations @ www.campsd.com | 1.800.710.2267