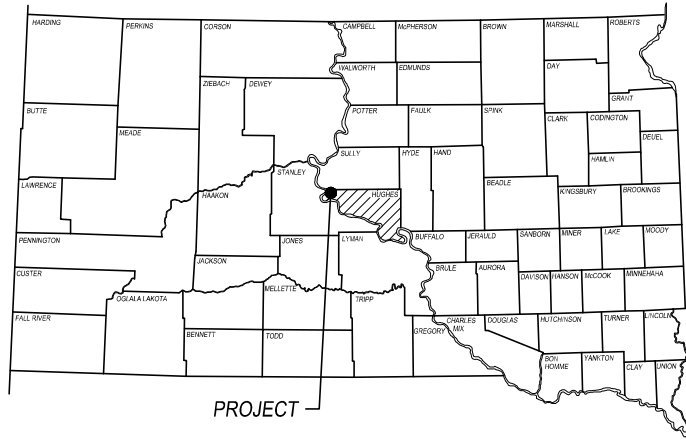
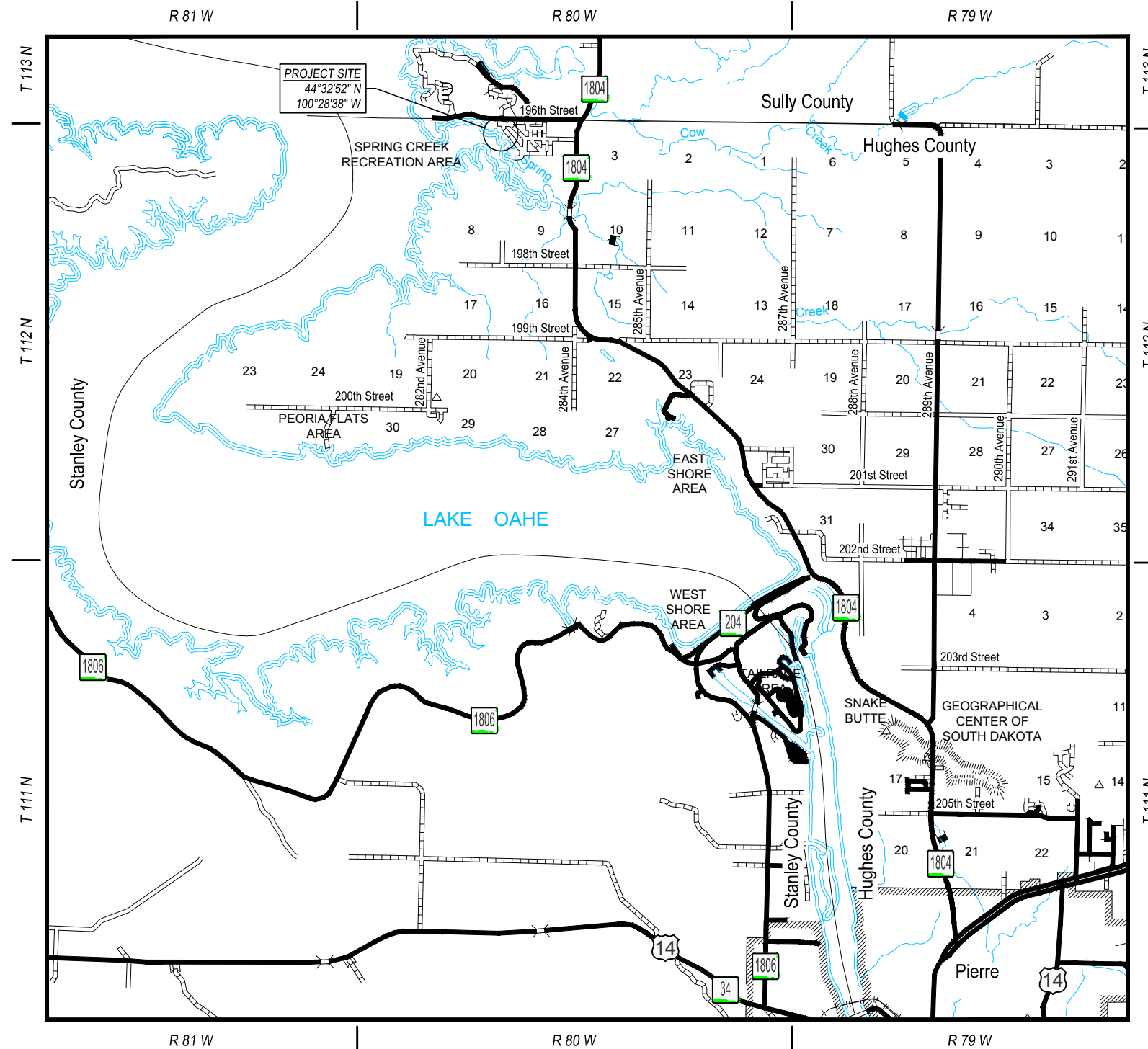


SPRING CREEK RECREATION AREA SOUTH DAKOTA DEPARTMENT OF GAME, FISH, AND PARKS BOAT RAMP ACCESS AREA CONSTRUCTION PROJECT NO. SpCk23Ma HUGHES COUNTY, SOUTH DAKOTA T 112N, R 80W, SEC. 5



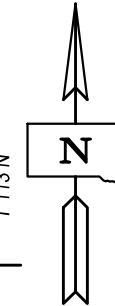
PROJECT LOCATION



LOCATION MAP

INDEX OF SHEETS

Sheet No. 1	Title Sheet
Sheet No. 2 - 4	Concept Plan
Sheet No. 5 - 6	Concept Profiles
Sheet No. 7 - 10	Boat Ramp Cross Sections
Sheet No. 11 - 13	Parking Lot Cross Sections
Sheet No. 14 - 15	Overflow Parking Cross Sections
Sheet No. 16	Entrance Cross Sections



Plotted on: 11/17/23 10:50:52 AM
G:\2023\23004112_000\Design\Civil\Plot\23004112_Central Cover, Notes & Details.dwg



Know what's below.
Call before you dig.



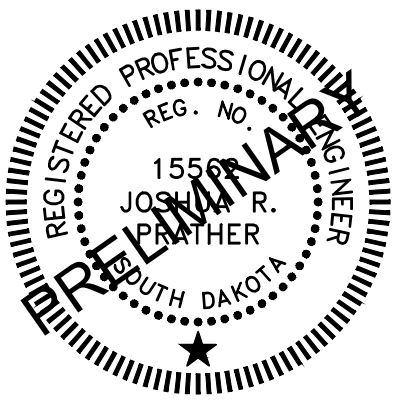
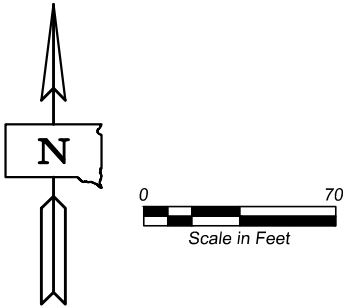
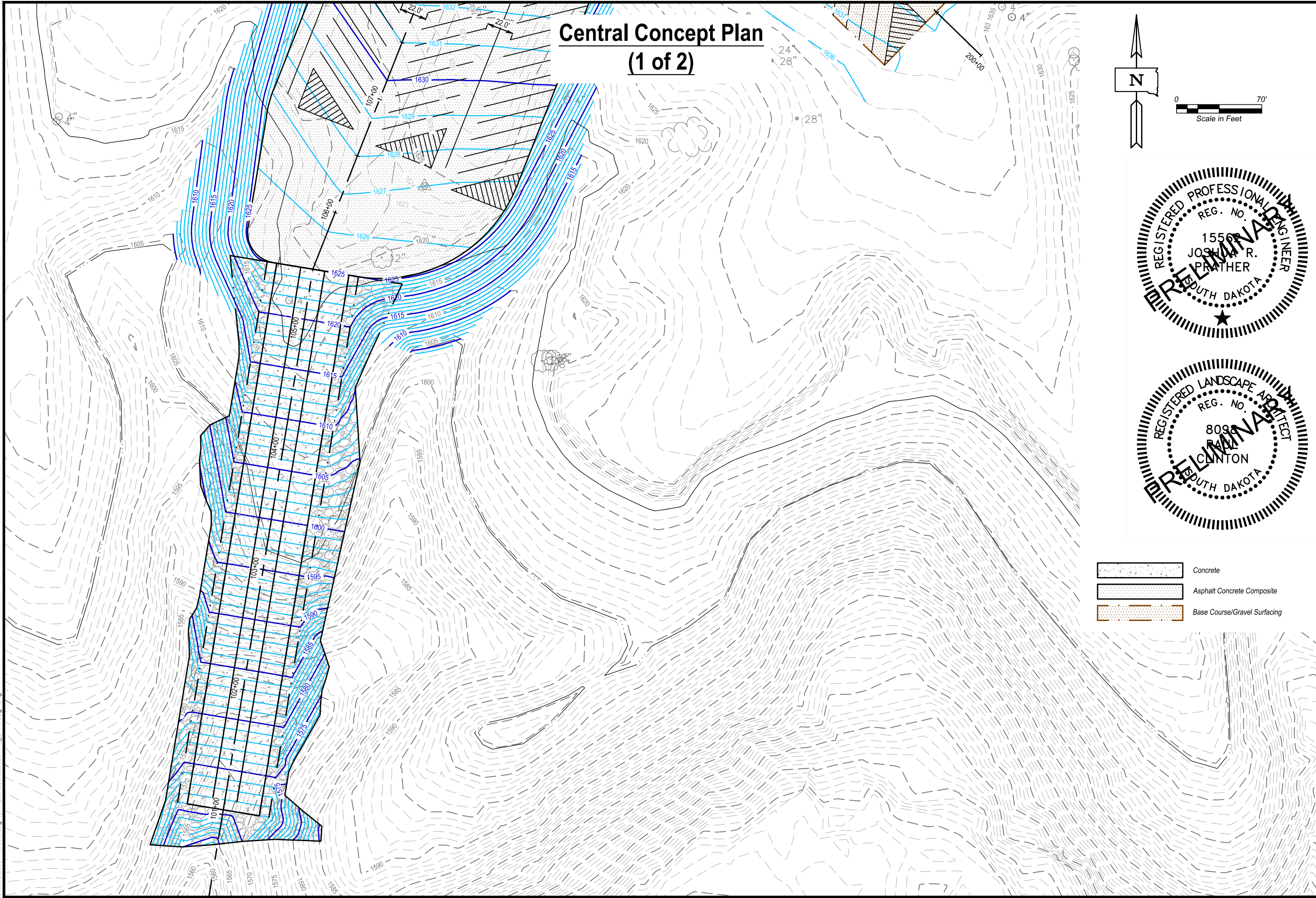
Division of Administration
Foss Building
523 E. Capitol Ave.
Pierre, South Dakota 57501-3182
Phone: (605) 773 - 6082



DATE	October 2025
PROJECT NUMBER	SpCk23Ma
DRAWN BY	TLB
CHECKED BY	JJP

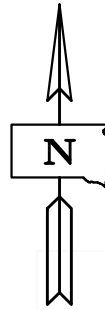
CENTRAL ACCESS AREA CONSTRUCTION
SPRING CREEK RECREATION AREA
HUGHES COUNTY, SOUTH DAKOTA

Central Concept Plan (1 of 2)

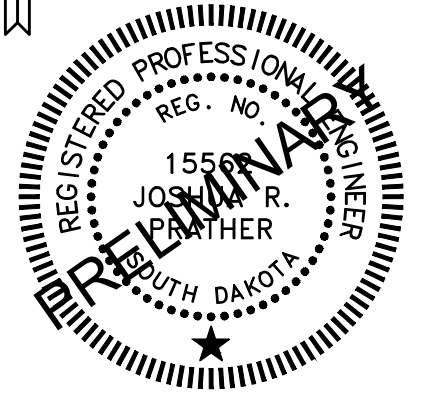





- Concrete
- Asphalt Concrete Composite
- Base Course/Gravel Surfacing

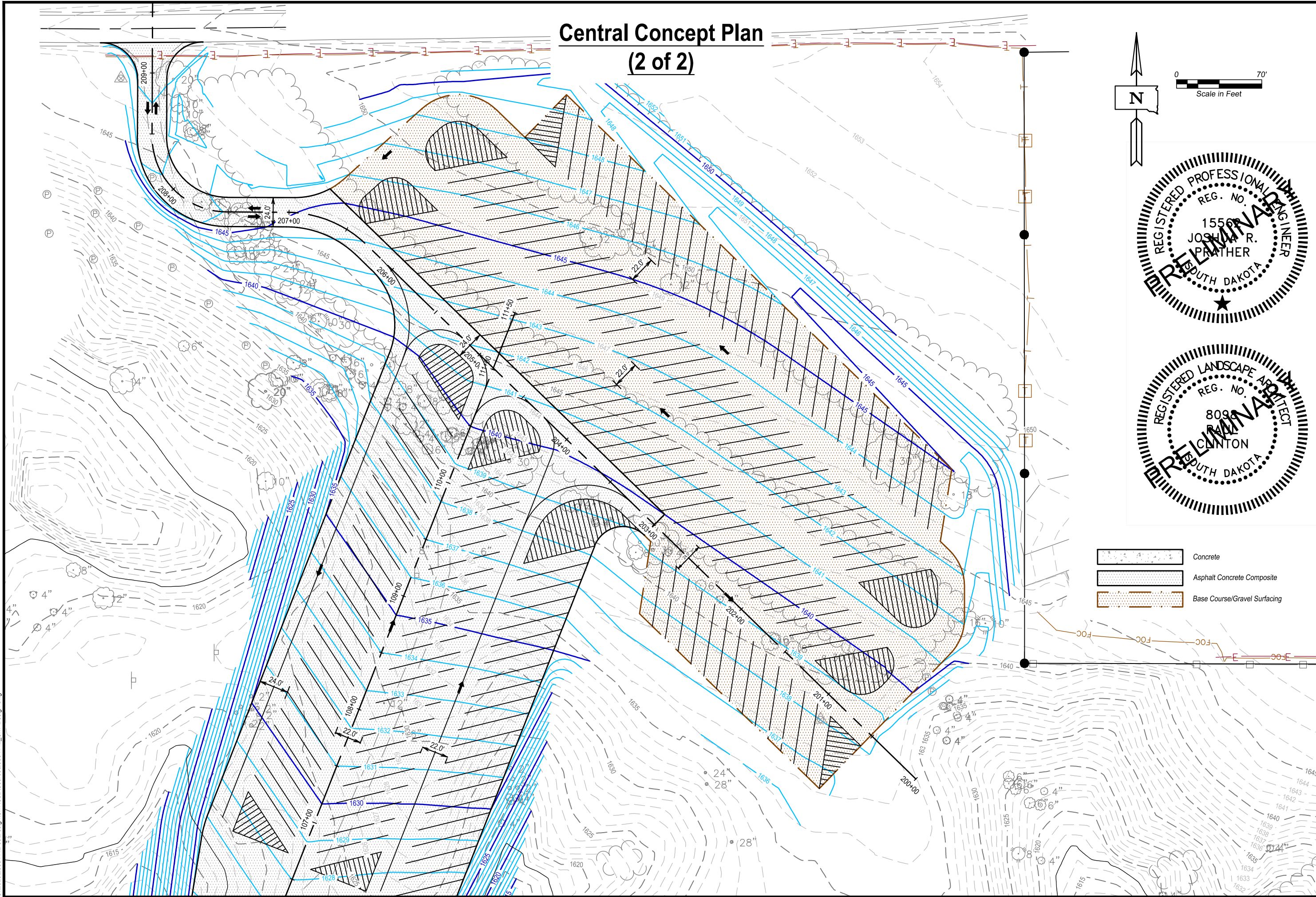
Central Concept Plan (2 of 2)



0 70'
Scale in Feet



-  Concrete
-  Asphalt Concrete Composite
-  Base Course/Gravel Surfing



Plotted on: 11/8/23 2:10:24 PM
G:\2023\23004\112\00\Design\Civil\C3D\Source\23004112_Civil_Design.dwg
Plotted by: Tyler L. Bierke

Division of Administration
Foss Building
523 E. Capitol Ave.
Pierre, South Dakota 57501-3182
Phone: (605) 773 - 6082



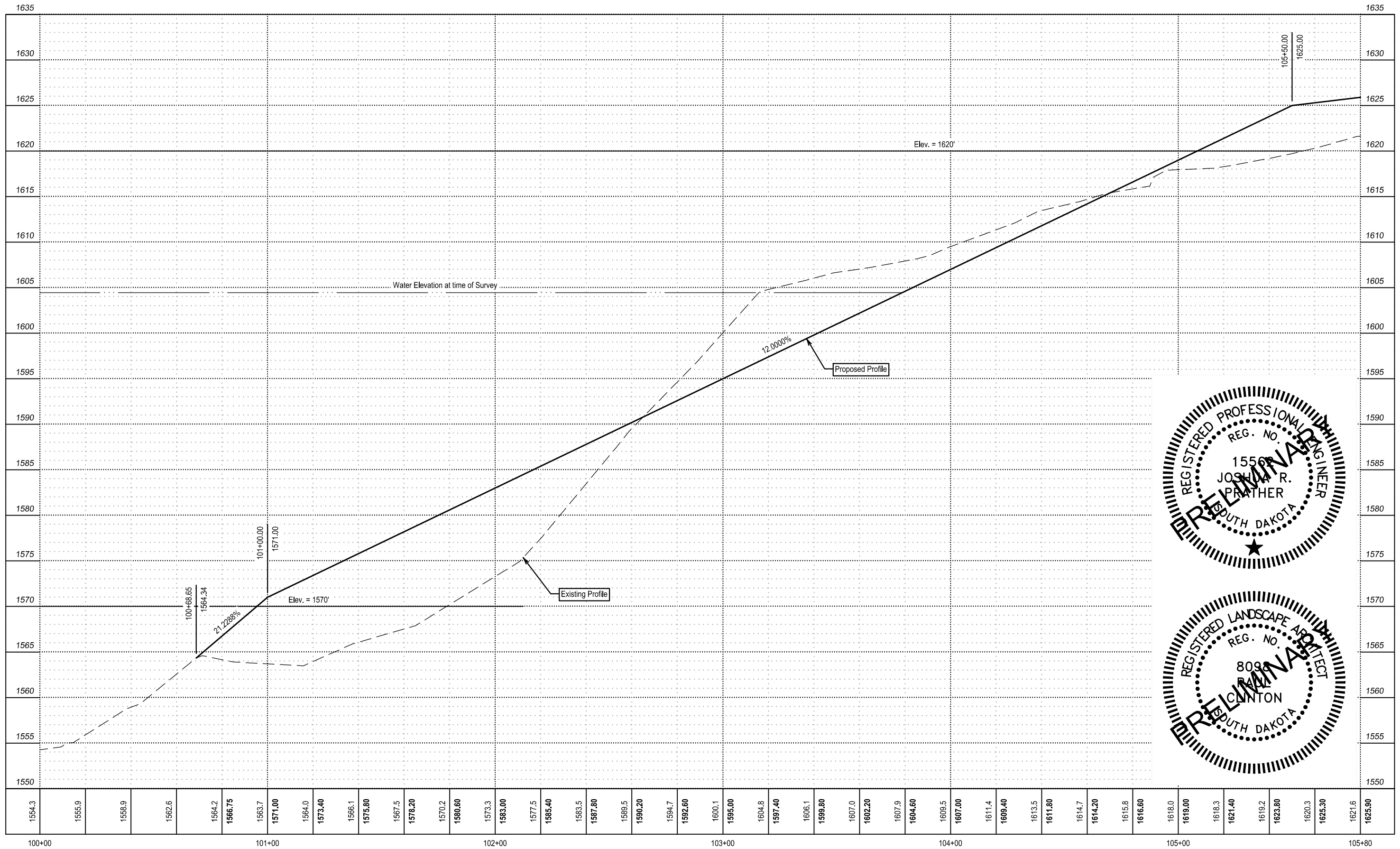
PROJECT NUMBER	5p2323Ma
DATE	October 2023
DESIGNER	TJB
CHECKED BY	JJP

CENTRAL ACCESS AREA CONSTRUCTION
SPRING CREEK RECREATION AREA
HUGHES COUNTY, SOUTH DAKOTA

4
OF
16

Central Concept Boat Ramp Profile

(1 of 2)



Plotted on: 11/17/23 10:51:51 AM
 G:\2023\23004\112\00\Design\Civil\C3D\Source\23004112_Civil_Design.dwg



Division of Administration
 Foss Building
 523 E. Capitol Ave.
 Pierre, South Dakota 57501-3182
 Phone: (605) 773 - 6082

Department of Game, Fish & Parks

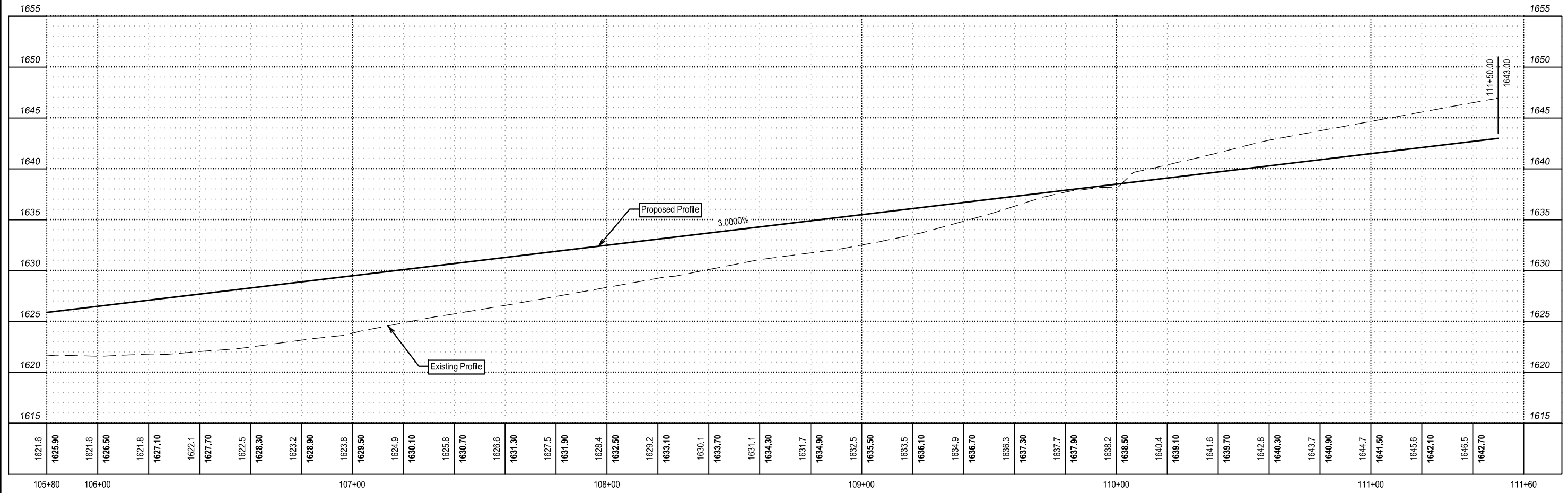
PROJECT NUMBER: 23004112
 DATE: October 2023
 DRAWN BY: JRP
 CHECKED BY: JRP

CENTRAL ACCESS AREA CONSTRUCTION
 SPRING CREEK RECREATION AREA
 HUGHES COUNTY, SOUTH DAKOTA

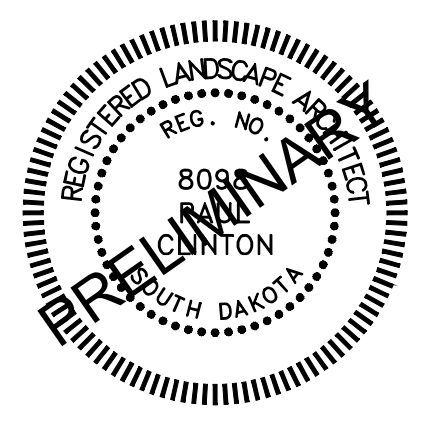
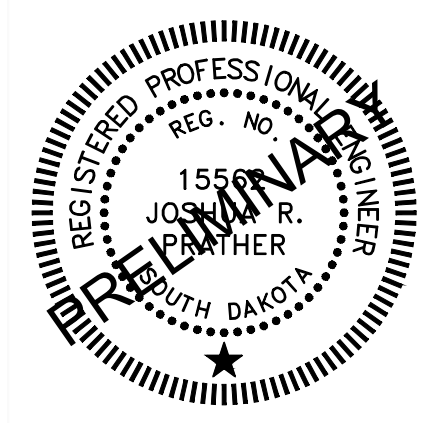
PAGE: 5 OF 16

Central Concept Parking Area Profile

(2 of 2)



Plotted on: 11/7/23 10:52:03 AM
 G:\2023\23004112\00\Design\Civil\C3D\Source\23004112_Civil_Design.dwg
 Plotted by: Tyler L. Bierke



Division of Administration
 Foss Building
 523 E. Capitol Ave.
 Pierre, South Dakota 57501-3182
 Phone: (605) 773 - 6082

Department of Game, Fish & Parks

PROJECT NUMBER: 23004112
 DATE: October 2023
 DRAWN BY: TLB
 CHECKED BY: JRP

DATE: October 2023
 DRAWN BY: TLB
 CHECKED BY: JRP

CENTRAL ACCESS AREA CONSTRUCTION
 SPRING CREEK RECREATION AREA
 HUGHES COUNTY, SOUTH DAKOTA

6
 OF
 16